

		/				
--	--	---	--	--	--	--



**RABE**



## Important pour la commande de pièces de rechange

Lors de chaque commande de pièces, veuillez nous communiquer les données suivantes:

1. Type de la machine (gravé sur la plaque d'identification).
2. Numéro de série de la machine (gravé sur la Plaque d'identification et le bâti).
3. Numéro de pièce.
4. La quantité nécessaire de pièces de rechange.

## Important for ordering spare parts

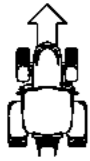
Please give the following information whenever you order spare parts:

1. Type of the machine (stamped on type plate)
2. Serial number (stamped on type plate and frame)
3. Part number.
4. The required quantity of the spare parts.

### Plaquette / Identification plate

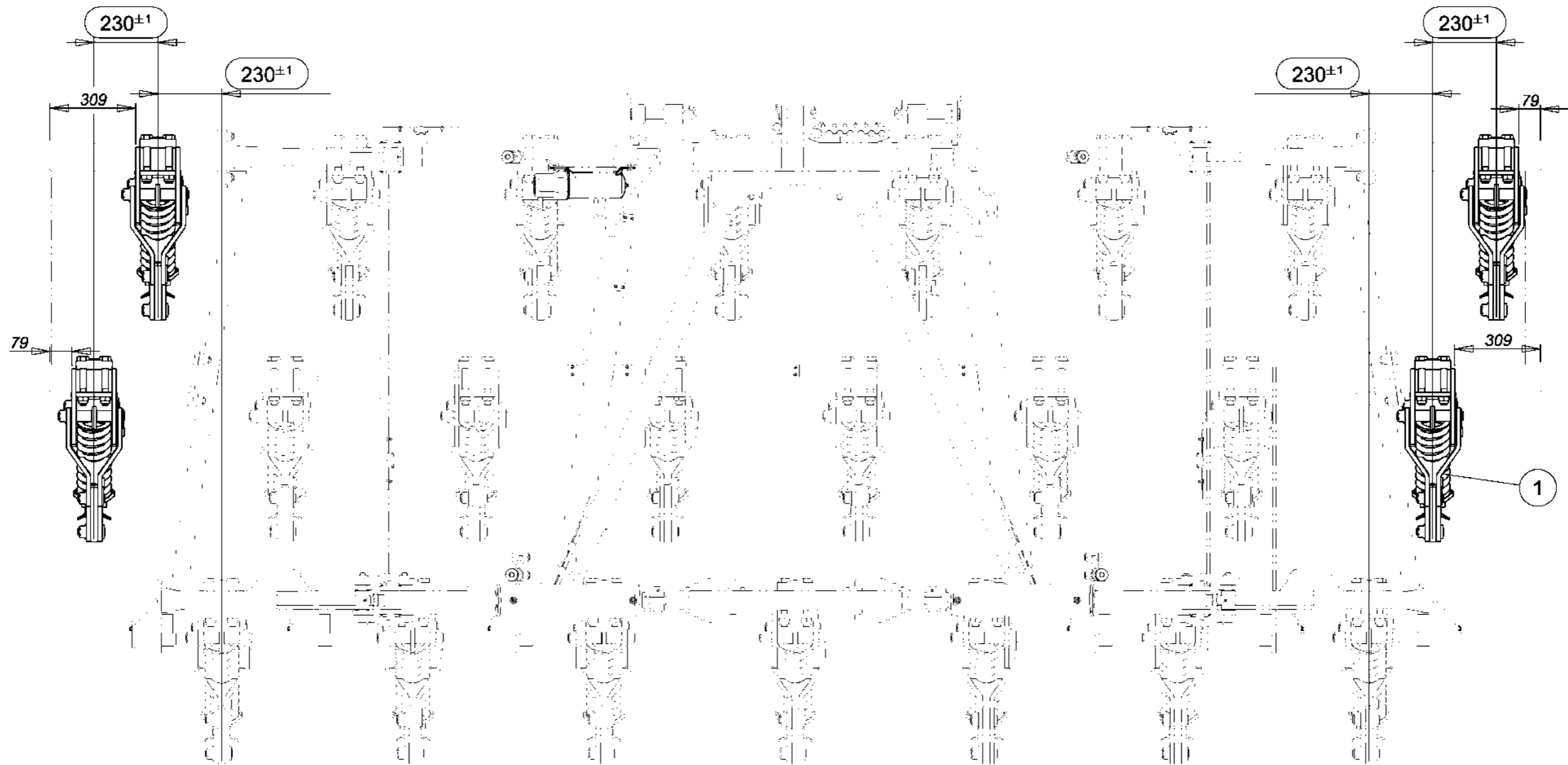


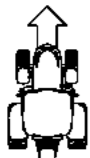




*Machine 5,30m - 23 dts - Pas 230*  
*Machine 5,30m - 23 tines - Spacing 230*

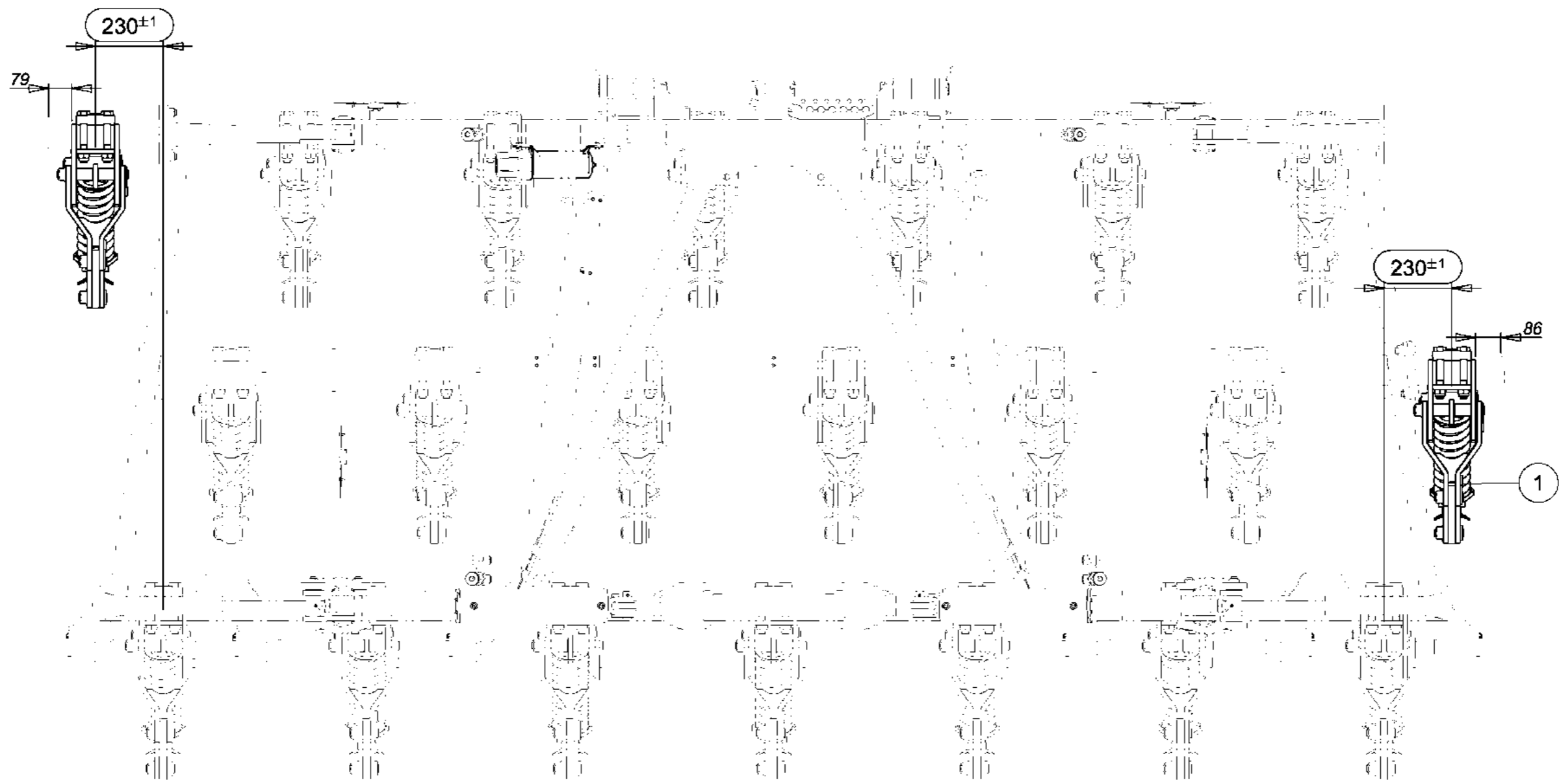
<i>Index</i>	<i>Quantite</i>	<i>Reference</i>	<i>Designation</i>
1	4	26850	DENT PARALIFT RESSORT PARALIFT TINE - SPRING
-	-	26115	DENT PARALIFT - BOULON PARALIFT TINE - SHEAR BOLT

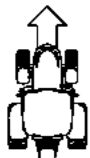




*Machine 4,85m - 21 dts - Pas 230*  
*Machine 4,85m - 21 tines - Spacing 230*

<i>Index</i>	<i>Quantite</i>	<i>Reference</i>	<i>Designation</i>
1	2	26850	DENT PARALIFT RESSORT PARALIFT TINE - SPRING
-	-	26115	DENT PARALIFT - BOULON PARALIFT TINE - SHEAR BOLT

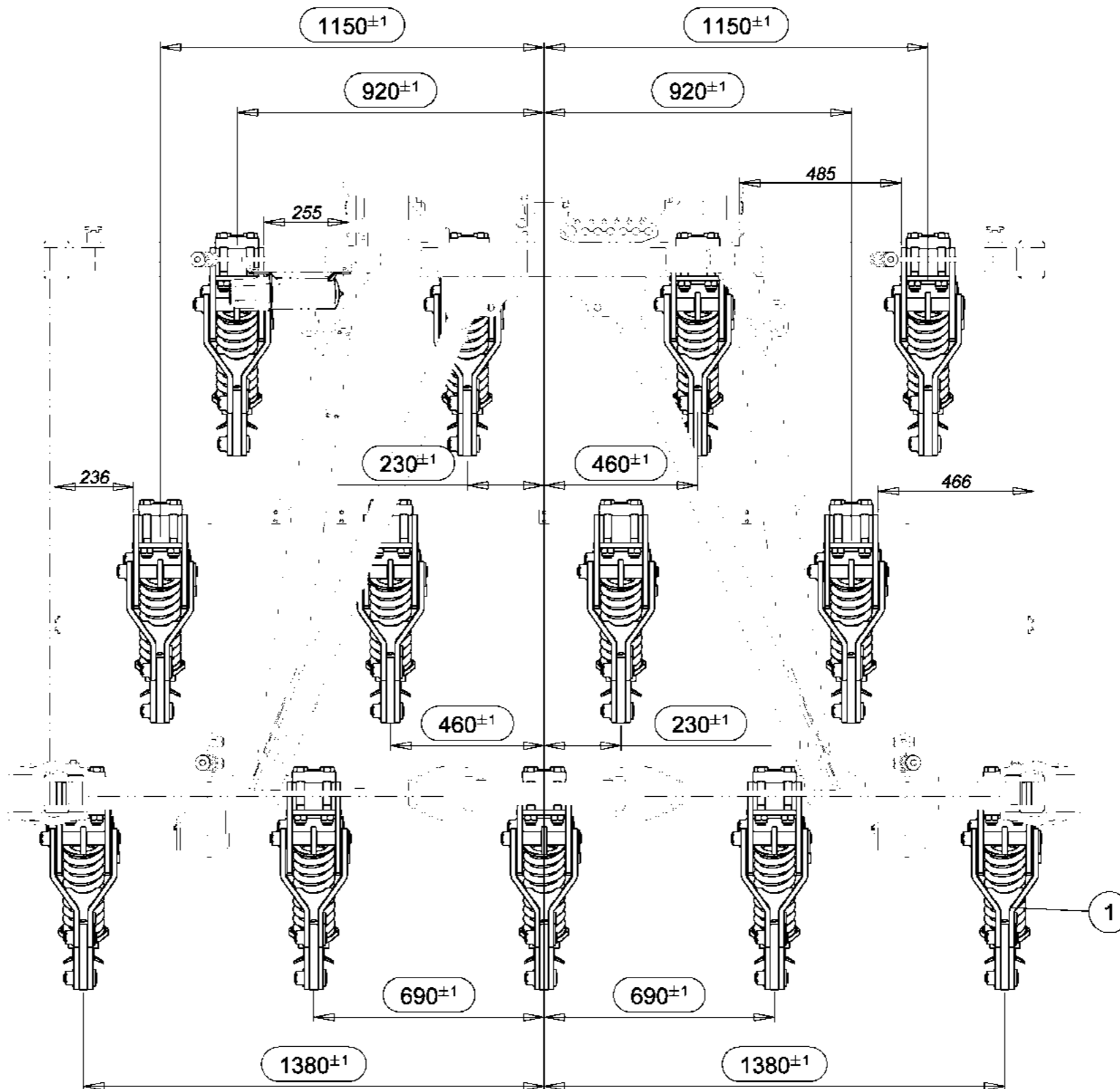




*Châssis central 230*

*Central frame 230*

Index	Quantité	Reference	Designation
1	13	26850	DENT PARALIFT RESSORT PARALIFT TINE - SPRING
-	-	26115	DENT PARALIFT - BOULON PARALIFT TINE - SHEAR BOLT



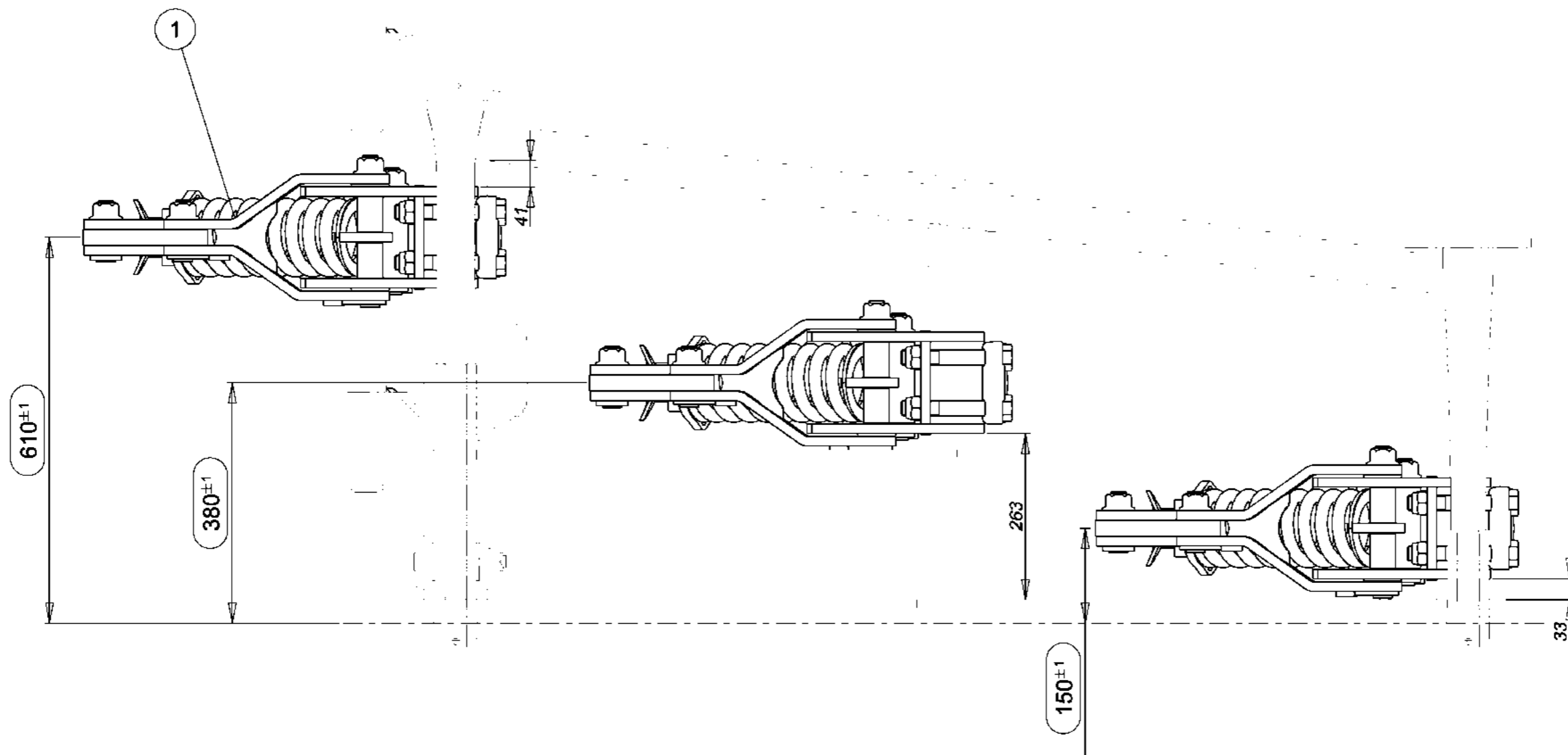
PRODUCTION



*Aile gauche 230*

*Left wing 230*

<i>Index</i>	<i>Quantite</i>	<i>Reference</i>	<i>Designation</i>
1	3	26850	DENT PARALIFT RESSORT PARALIFT TINE - SPRING
-	-	26115	DENT PARALIFT - BOULON PARALIFT TINE - SHEAR BOLT



6 432 547 (1/1)

11-May-17

Revision : A

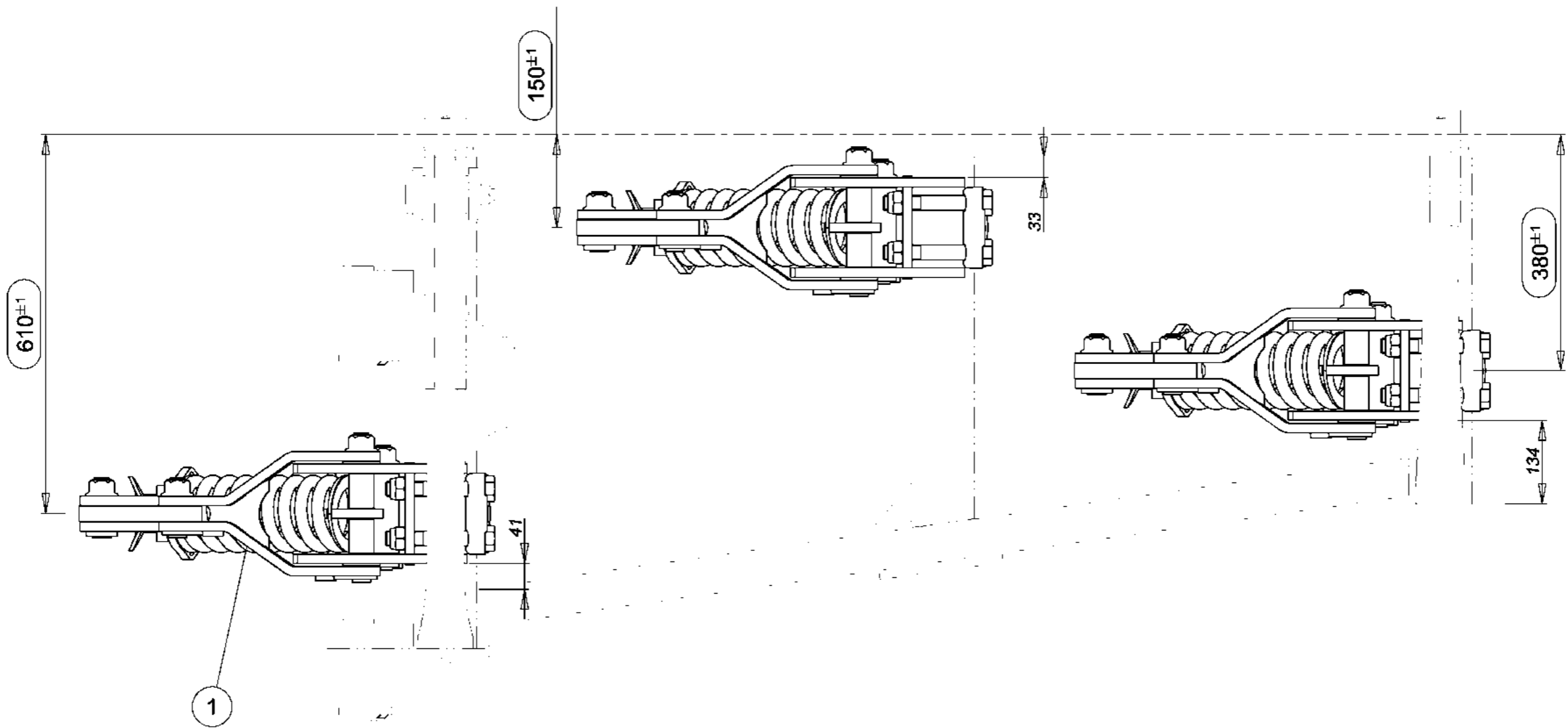
MaJ : 22-May-17





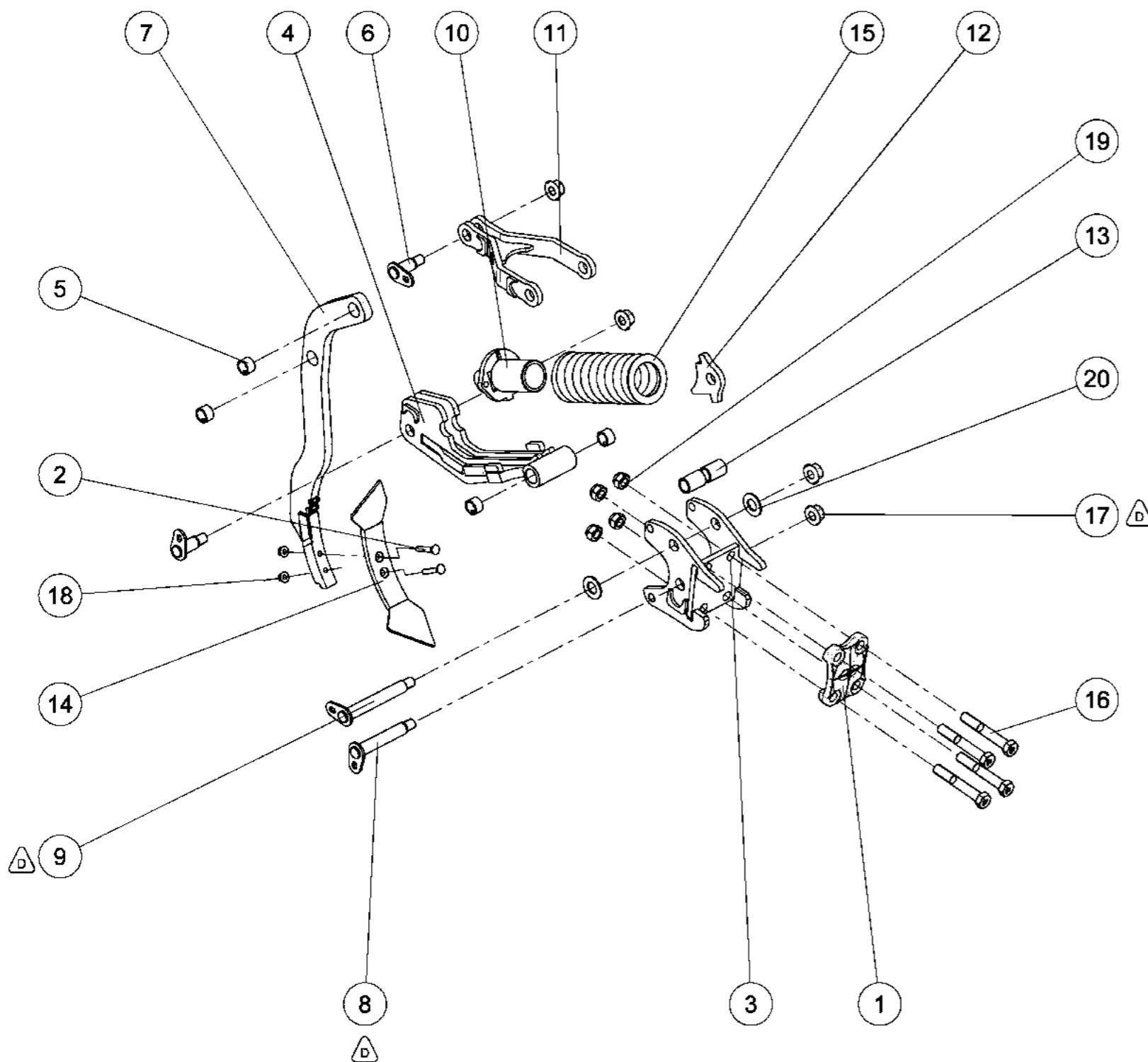
*Aile droite 230*  
*Right wing 230*

<i>Index</i>	<i>Quantite</i>	<i>Reference</i>	<i>Designation</i>
1	3	26850	DENT PARALIFT RESSORT PARALIFT TINE - SPRING
-	-	26115	DENT PARALIFT - BOULON PARALIFT TINE - SHEAR BOLT





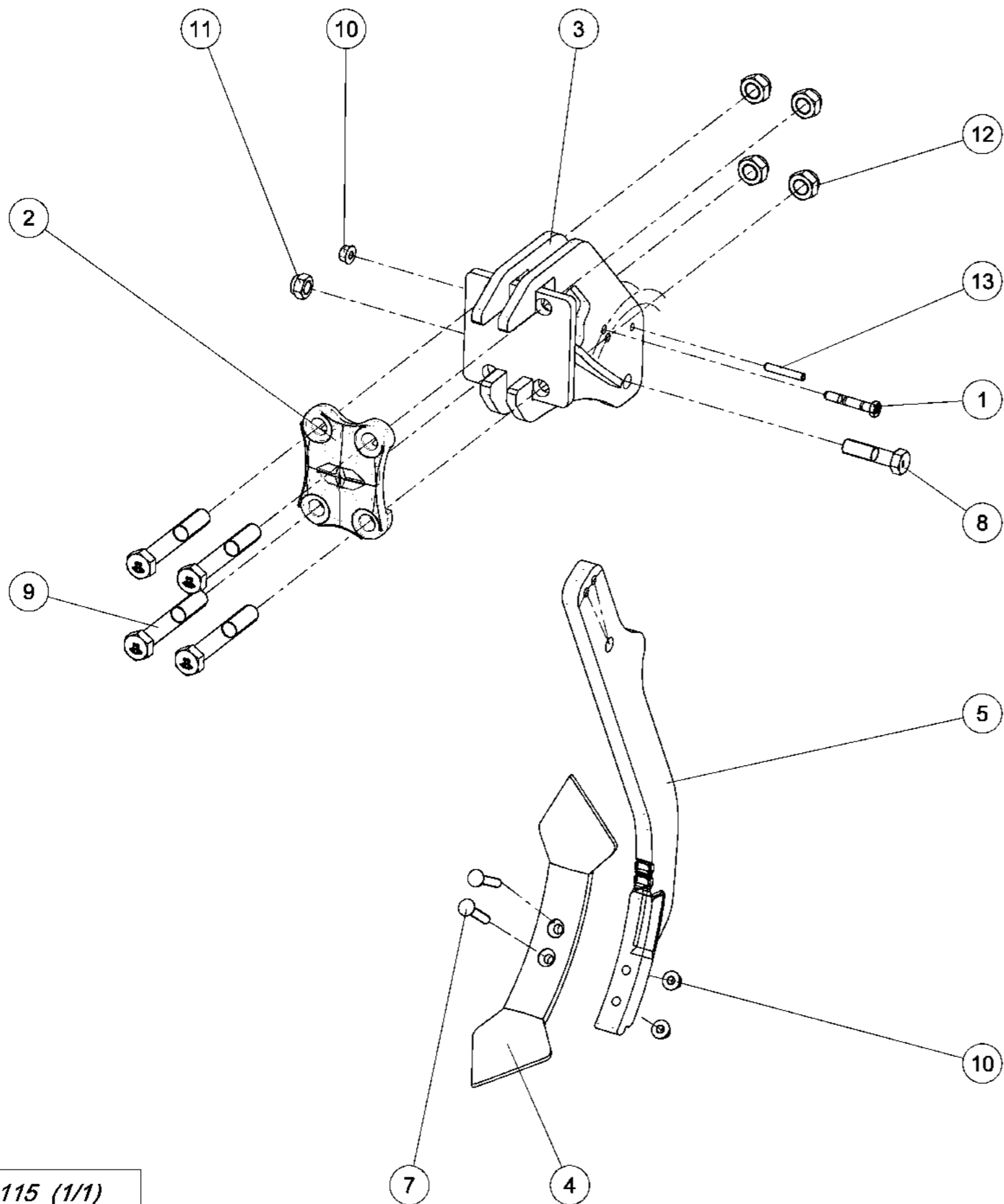
**DENT PARALIFT RESSORT**  
**PARALIFT TINE - SPRING**



Index	Quantite	Reference	Designation
1	1	6 920 138	Contre plaque Eurochisel M24 M24 Eurochisel counter-plate
2	2	11 189	Vis TFCC M12x 70 - 12.9 ZNBL DIN608 Screw TFCC M12x 70 - 12.9 ZNBL DIN608
3	1	26851	BOITIER
4	1	26853	BIELLE INFERIEURE
5	4	26886	Bagues acier Ø 38 x 30 x 25 Steel bushing Ø 38 x 30 x 25
6	2	26888	AXE Ø30 Lt96 Lst85
7	1	26890	ETANCON SOUDE ..
8	1	26892	AXE Ø30 Lt201 Lst190
9	1	26894	AXE Ø30 Lt241 Lst230
10	1	26899	SOUS ENSEMBLE PIVOT + GUIDAGE RESSORT
11	1	26905	BIELLE SUPERIEURE
12	1	26915	PIECE D'ORIENTATION RESSORT Spring positioning part
13	2	26916	DOUILLE SOCKET
14	1	6331.04.02	..
15	1	M670014	Ressort comp Dia 127x82.5x407 fil Dia 20 Compression spring Ø127 x 82.5 x 407 cord Ø20
16	4	VI 35 12	Vis H M24x160 - 8.8 ZNBL DIN931 Screw H M24x160 - 8.8 ZNBL DIN931
17	4	VJ 147	Ecrou HEFR M24 emb. S.Lock Cl.10 ZNBL DIN6927 HEFR M24 Flg nut Gr.10 ZNBL DIN6927
18	2	VJ 157	Ecrou HEFR M12 emb. S.Lock Cl.10 ZNBL DIN6927 HEFR M12 Flg nut Gr.10 ZNBL DIN6927
19	4	VJ 331	Ecrou frein std H M 24 - 8 ZNBL DIN985 Nyloc nut std H M 24 - 8 ZNBL DIN985
20	2	VK 513	Rondelle plate MU30 ZNBL NFE25513 Flat washer MU30 ZNBL NFE25513



**DENT SECURITE BOULON - 800mm**  
**SHEAR BOLT TINE - 800mm**

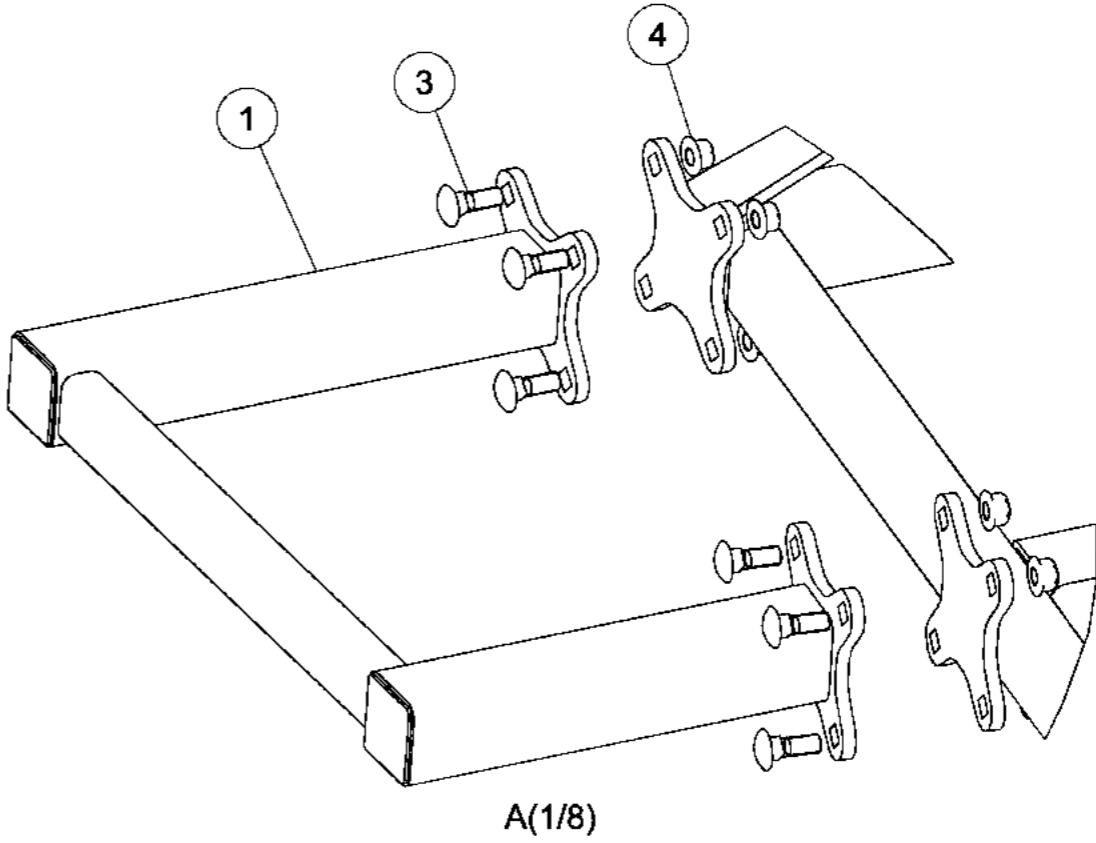
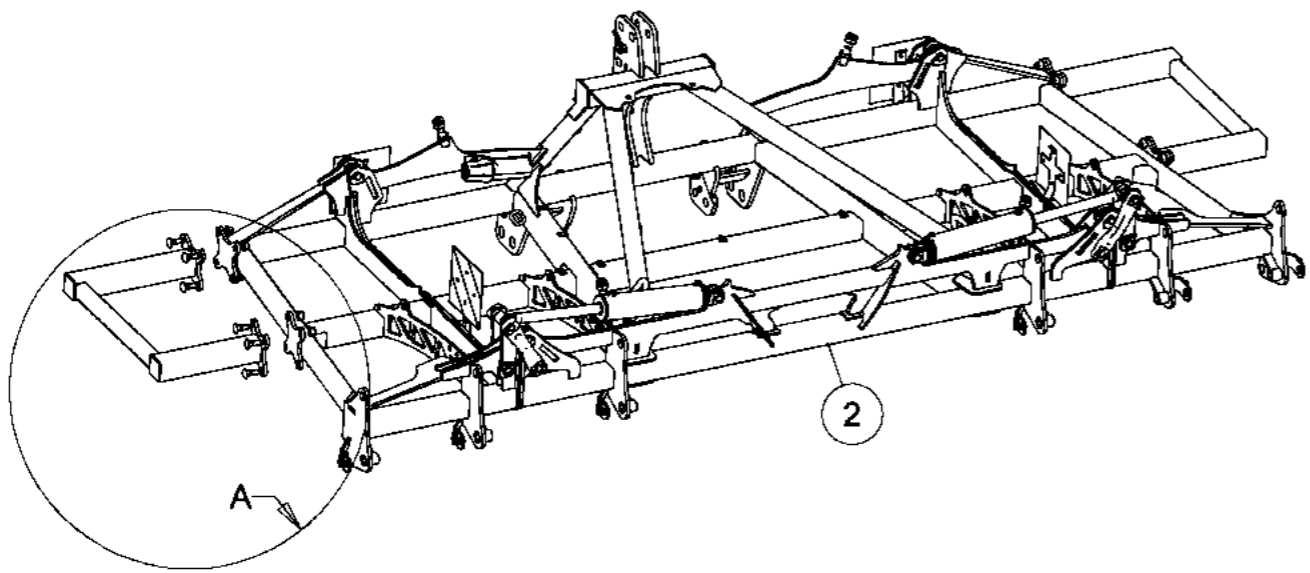


Index	Quantite	Reference	Designation
1	1	6 433 170	Vis HM12x75 rainurée 12.9 Screw HM12x75 10.9 grooved 12.9
2	1	6 920 138	Contre plaque Eurochisel M24 M24 Eurochisel counter-plate
3	1	26110	BOITIER SECURITE BOULON
4	1	6331.04.02	--
5	1	26848	ETANCON SOUDE - 800mm --
-	-	26846	ETANCON SOUDE - 700mm LEG - 700mm
7	2	SP 11 189	Vis TFCC M12x 70 - 12.9 Brut Screw TFCC M12x 70 - 12.9 Black
8	1	VI 33 07	Vis H M20x 80 - 8.8 ZNBL DIN931 Screw H M20x 80 - 8.8 ZNBL DIN931
9	4	VI 35 12	Vis H M24x160 - 8.8 ZNBL DIN931 Screw H M24x160 - 8.8 ZNBL DIN931
10	3	VJ 157	Ecrou HEFR M12 emb. S.Lock Cl.10 ZNBL DIN6927 HEFR M12 Flg nut Gr.10 ZNBL DIN6927
11	1	VJ 327	Ecrou frein std H M 20 - 8 ZNBL DIN985 Nyloc nut std H M 20 - 8 ZNBL DIN985
12	4	VJ 331	Ecrou frein std H M 24 - 8 ZNBL DIN985 Nyloc nut std H M 24 - 8 ZNBL DIN985
13	1	VL 225	Goupille elastique epaisse - 10x60 mm, ZNBL Thick roll pin - 10x60 mm, ZNBL



*Machine 5,30m - 23 dts - Pas 230*  
*Machine 5,30m - 23 tines - Spacing 230*

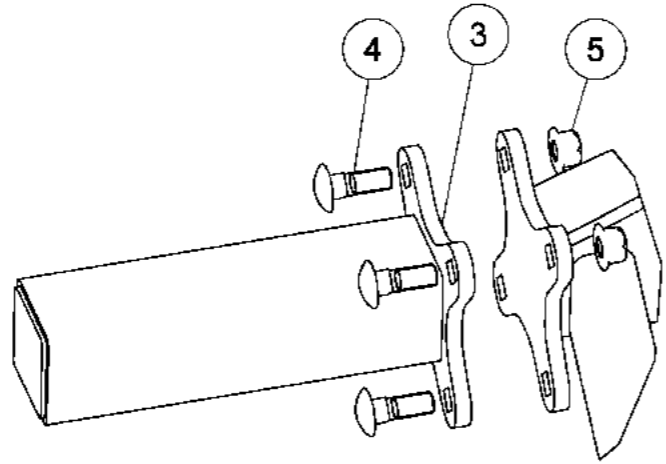
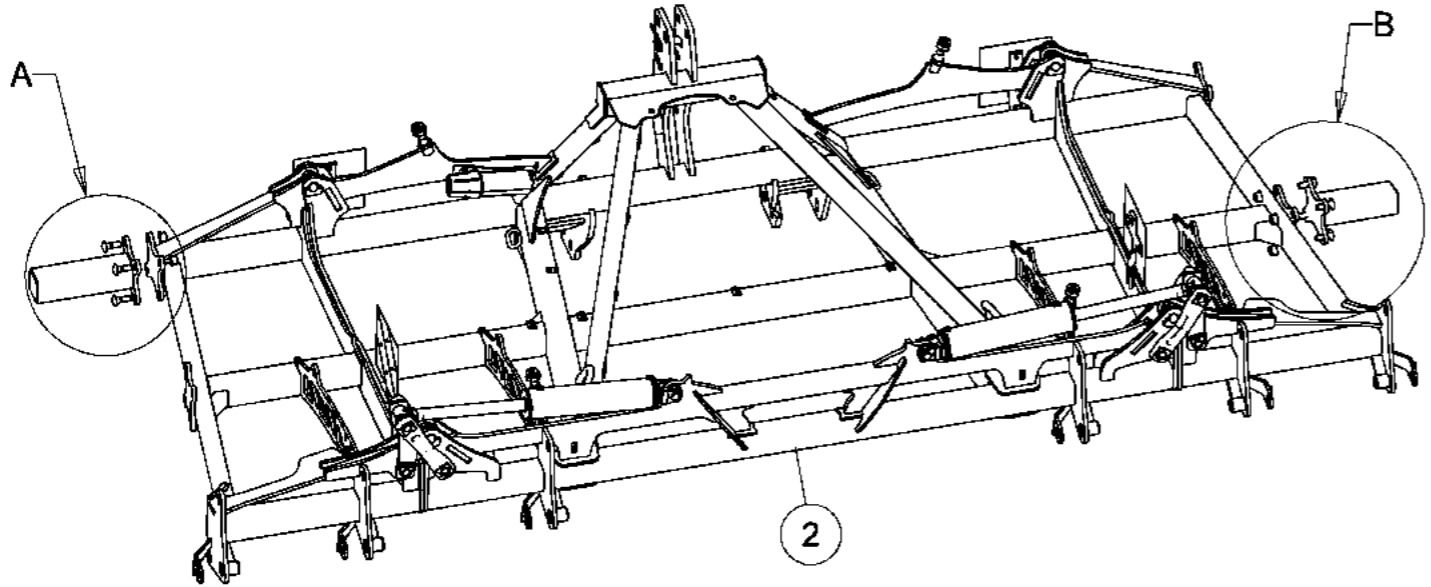
<i>Index</i>	<i>Quantite</i>	<i>Reference</i>	<i>Designation</i>
1	2	6 432 563	Rallonge d'aile Wing extension
2	1	571 944	Machine 4,40m - 19 dts - Pas 230 Machine 4,40m - 19 tines - Spacing 230
3	16	M 230 003	Vis TRCC M20x 60 - 8.8 ZNBL Screw TRCC M20x 60 - 8.8 ZNBL
4	16	VJ 145	Écrou HEFR M20 emb. S.Lock Cl.10 HEFR M20 Flg nut Gr.10 ZNBL



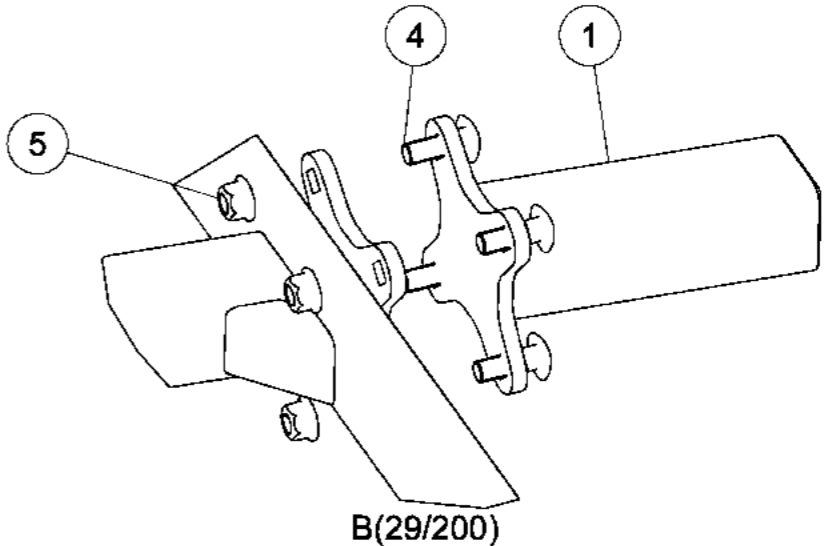


*Machine 4,85m - 21 dts - Pas 230*  
*Machine 4,85m - 21 tines - Spacing 230*

Index	Quantite	Reference	Designation
1	1	6 432 729	Rallonge 1 dent - 295 mm Extension for 1 tine - 295 mm
2	1	571 944	Machine 4,40m - 19 dts - Pas 230 Machine 4,40m - 19 tines - Spacing 230
3	1	6431223	Rallonge 1 dent - 375 mm Extension for 1 tine - 375 mm
4	8	M 230 003	Vis TRCC M20x 60 - 8.8 ZNBL Screw TRCC M20x 60 - 8.8 ZNBL
5	8	VJ 145	Ecrou HEFR M20 emb. S.Lock Cl.10 HEFR M20 Flg nut Gr.10 ZNBL



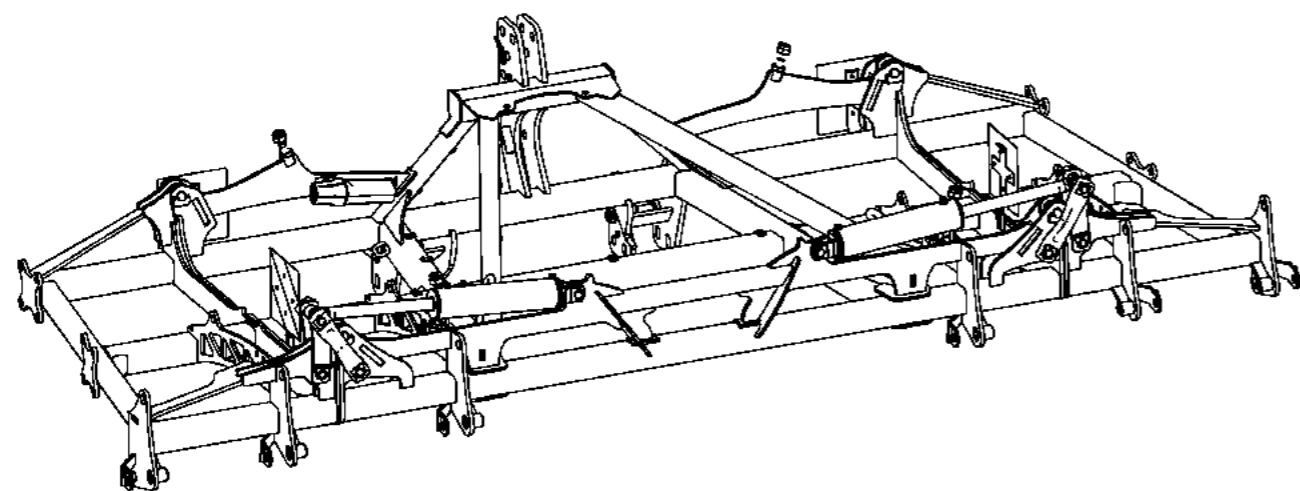
A(29/200)



B(29/200)



*Machine 4,40m - 19 dts - Pas 230*  
*Machine 4,40m - 19 tines - Spacing 230*

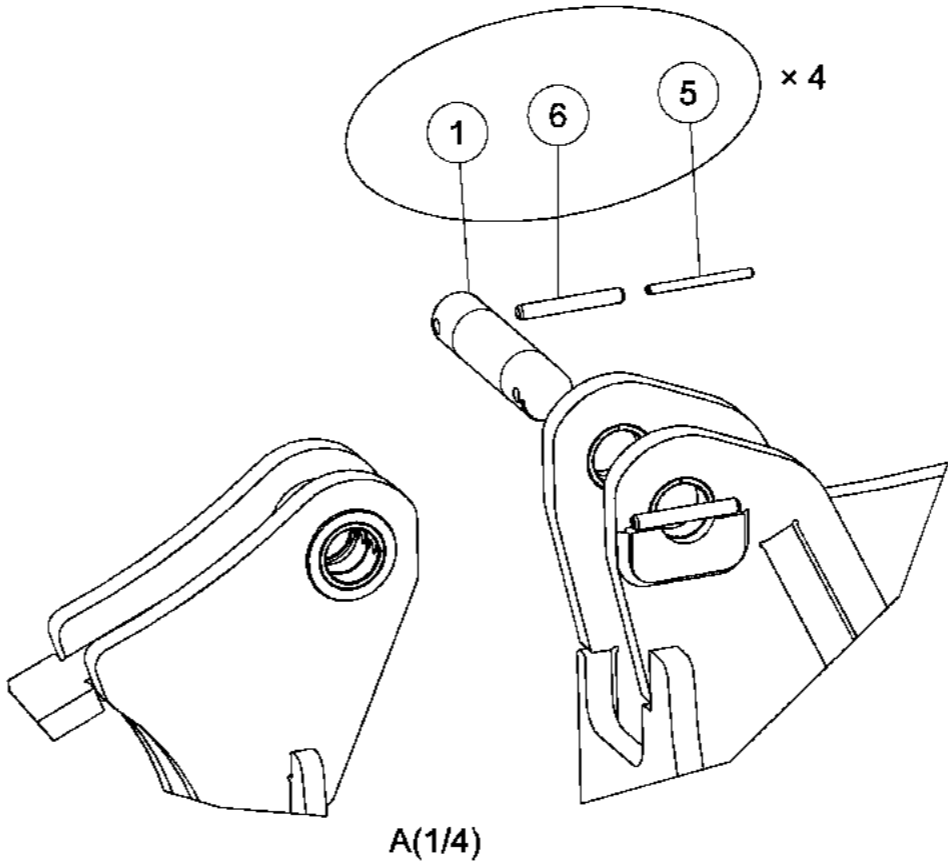
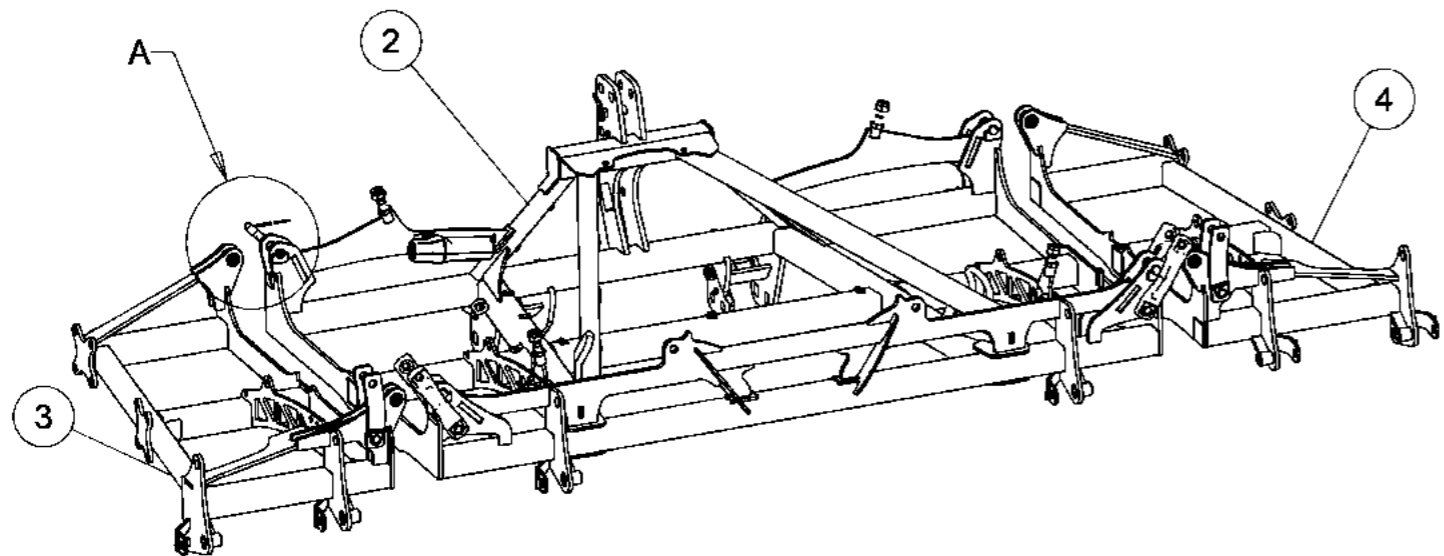


<i>Index</i>	<i>Quantite</i>	<i>Reference</i>	<i>Designation</i>
1	4	6 430 701	Axe de repliage à plat Ø 30 Flat folding axle Ø 30
2	1	6 432 523	Châssis central 230 Central frame 230
3	1	6 432 547	Aile gauche 230 Left wing 230
4	1	6 432 554	Aile droite 230 Right wing 230
5	2	6 432 746	Axe soude Du30 Lst169 Lu141 Weld axle Ø30 Ut1169 U1141
6	2	7 017 782	Ensemble réfléchissant 282x282 VG Reflective kit 282x282 LV
7	2	7 017 784	Ensemble réfléchissant 282x282 VD Reflective kit 282x282 RV
8	2	061 505 700	Axe D:30mm - Lg:79-62mm Axle D:30mm - Lg:79-62mm
9	2	M 500 406	Vérin DE 100X 45C392 EAF681 Double acting ram 100x45C392 EAF681
10	8	SP 00 348	Goupille elastique epaisse - 5x60 mm Thick roll pin - 5x60 mm
11	2	VJ 145	Ecrou HEFR M20 emb. S.Lock Cl.10 HEFR M20 Flg nut Gr.10 ZNBL
12	4	VK 513	Rondelle plate MU30 ZNBL Flat washer MU30 ZNBL
13	10	VL 223	Goupille elastique epaisse - 8x60 mm, ZNBL Thick roll pin - 8x60 mm, ZNBL



*Machine 4,40m - 19 dts - Pas 230*  
*Machine 4,40m - 19 tines - Spacing 230*

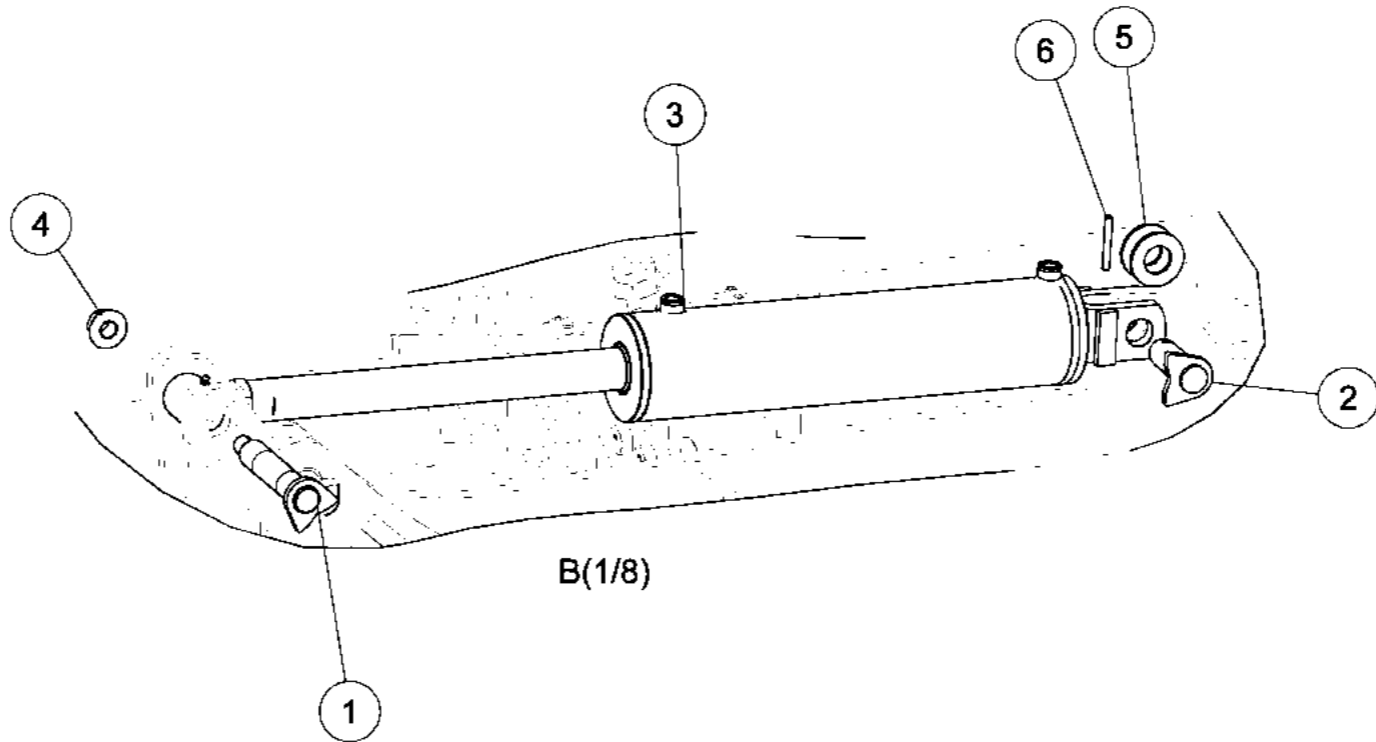
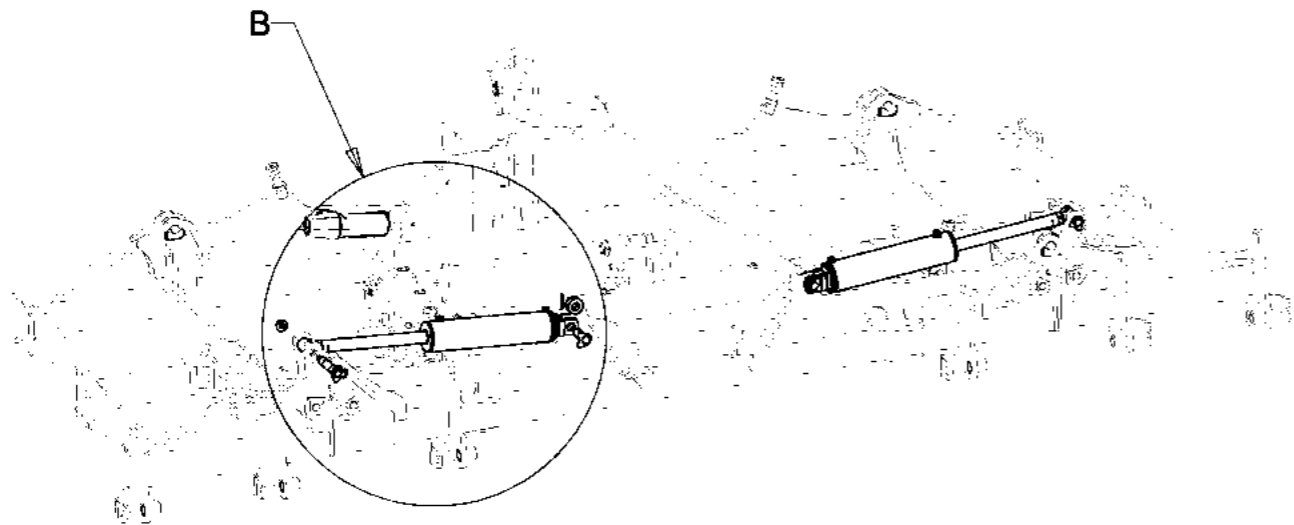
Index	Quantite	Reference	Designation
1	4	6 430 701	Axe de repliage à plat Ø 30 Flat folding axle Ø 30
2	1	6 432 523	Châssis central 230 Central frame 230
3	1	6 432 547	Aile gauche 230 Left wing 230
4	1	6 432 554	Aile droite 230 Right wing 230
5	8	SP 00 348	Goupille elastique epaisse - 5x60 mm Thick roll pin - 5x60 mm
6	8	VL 223	Goupille elastique epaisse - 8x60 mm, ZNBL Thick roll pin - 8x60 mm, ZNBL





*Machine 4,40m - 19 dts - Pas 230*  
*Machine 4,40m - 19 tines - Spacing 230*

Index	Quantite	Reference	Designation
1	2	6 432 746	Axe soude Du30 Lst169 Lu141 Weld axle Ø30 Ut1169 U1141
2	2	061 505 700	Axe D:30mm - Lg:79-62mm Axle D:30mm - Lg:79-62mm
3	2	M 500 406	Vérin DE 100X 45C392 EAF681 Double acting ram 100x45C392 EAF681
4	2	VJ 145	Écrou HEFR M20 emb. S.Lock Cl.10 HEFR M20 Flg nut Gr.10 ZNBL
5	4	VK 513	Rondelle plate MU30 ZNBL Flat washer MU30 ZNBL
6	10	VL 223	Goupille elastique epaisse - 8x60 mm, ZNBL Thick roll pin - 8x60 mm, ZNBL



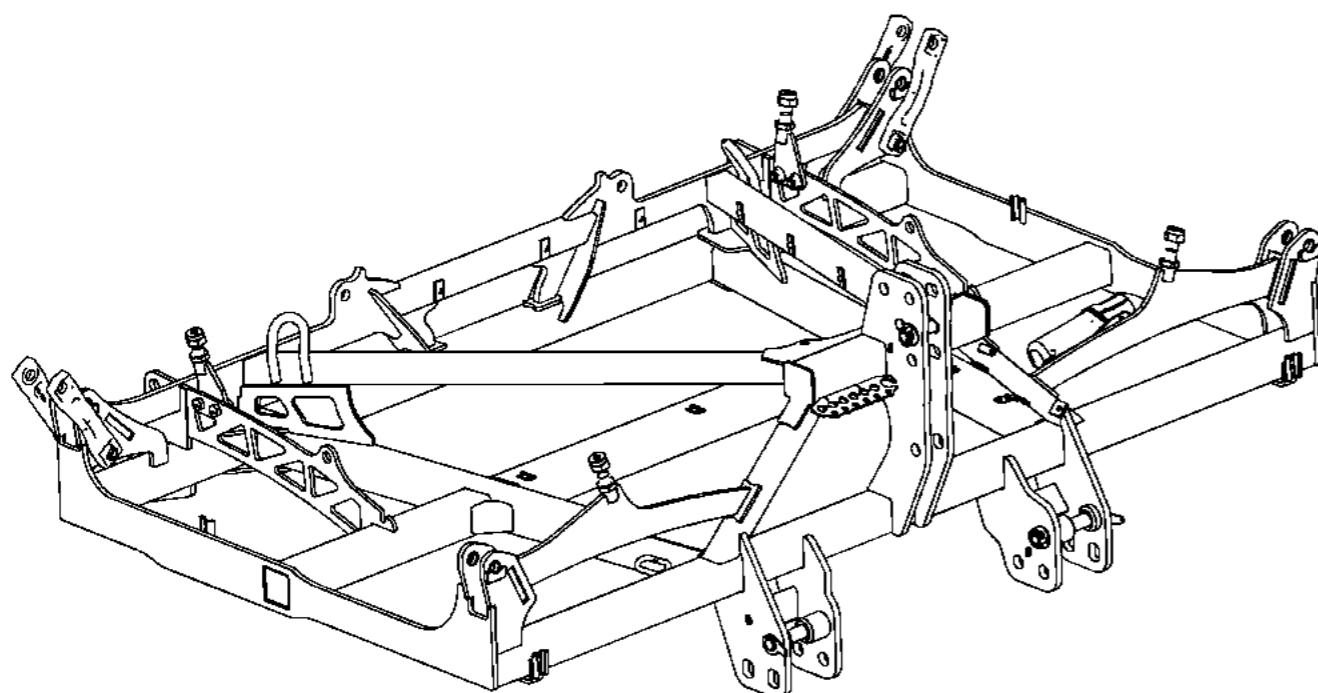




*Machine 4,40m - 19 dts - Pas 230*  
*Machine 4,40m - 19 tines - Spacing 230*

<i>Index</i>	<i>Quantite</i>	<i>Reference</i>	<i>Designation</i>
1	2	7 017 782	Ensemble réfléchissant 282×282 VG Reflective kit 282×282 LV
2	2	7 017 784	Ensemble réfléchissant 282×282 VD Reflective kit 282×282 RV



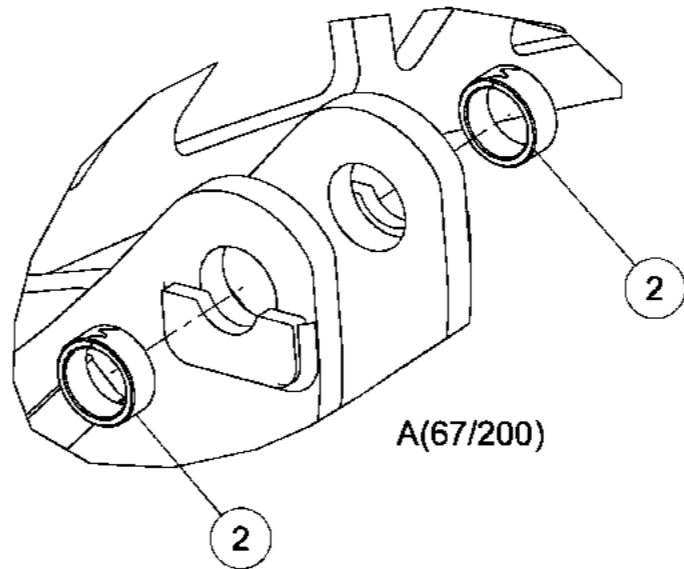
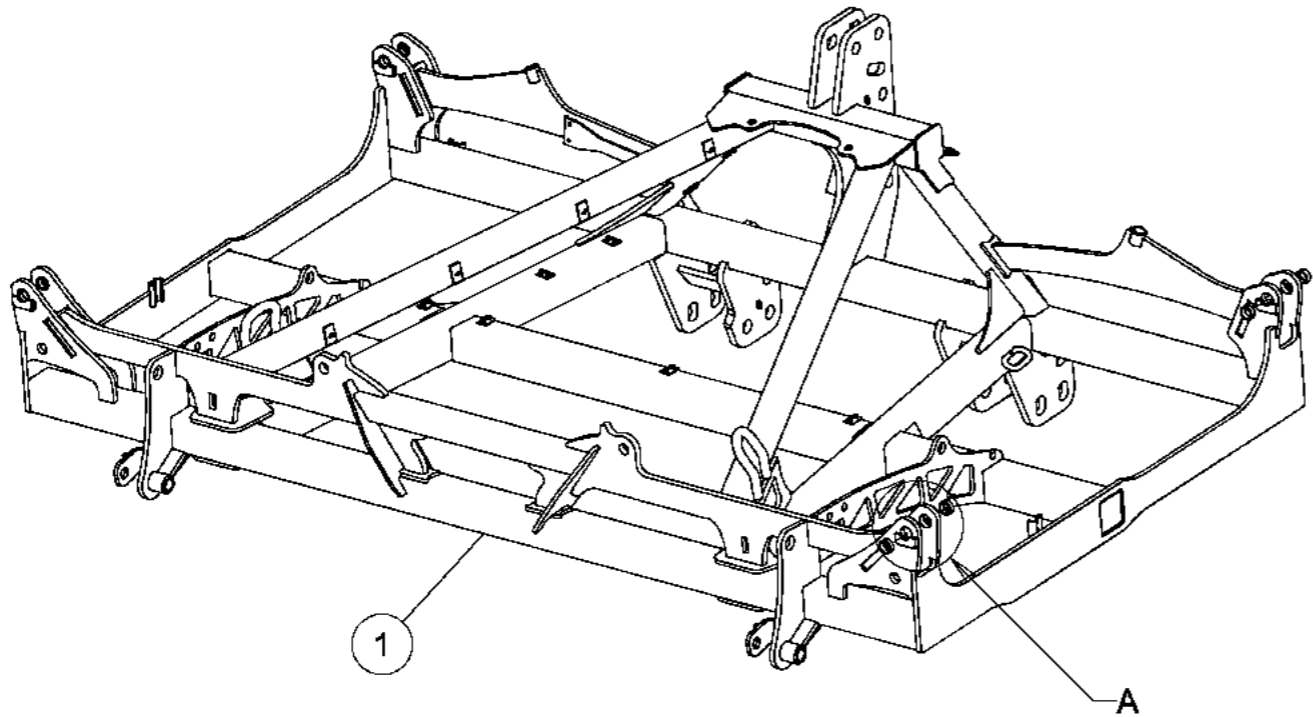
*Châssis central 230**Central frame 230*

<i>Index</i>	<i>Quantité</i>	<i>Reference</i>	<i>Designation</i>
1	4	6 432 523 A	Butée de repliage Folding stop
2	1	6 432 524	Châssis central 230 Central frame 230
3	1	6 432 715	Tole butée repliage Stop folding sheet metal
4	1	6 432 716	Tole butée repliage Stop folding sheet metal
5	1	6 432 727	Vis butée repliage Stop folding screw
6	3	6 432 728	Vis de butée de repliage Screw of stop folding
7	2	6 432 746	Axe soude Du30 Lst169 Lu141 Weld axle Ø30 Ut1169 U1141
8	1	6 432 860	Broche attelage 3 point montée 3 point linkage pin
9	2	6 432 862	Broche att. Inf. CAT III N & III monté Inferior hitch pin CAT III N & III
10	1	6 432 863	Goupille clips DIN 10x45 + chaîne 20 maillons Clips pin DIN 10 x 45 + chain 20 links
11	2	6 432 864	Goupille Clips DIN 10x45 + chaîne 8 maillons Clips pin DIN 10x45 + chain 8 links
12	4	6 920 171	Bielle EA278 - Ø30 Rod EA278 - Ø30
13	2	6258.13.15	Douille d'attelage Lg:70mm Hitch spacer length 70mm
14	2	6258.13.16	Douille d'attelage Lg:25mm Hitch spacer length 25mm
15	8	M260038	Bague acier - D:38x30x15mm Steel bushing - D:38x30x15mm
16	3	VI 27 04	Vis H M8x 20 - 8.8 ZNBL Screw H M8x 20 - 8.8 ZNBL
17	4	VI 33 03	Vis H M20x 50 - 8.8 ZNBL Screw H M20x 50 - 8.8 ZNBL
18	4	VI 49 12	Vis FHC M8x 20 - 10.9 ZNBL Screw FHC M8x 20 - 10.9 ZNBL
19	6	VJ 145	Ecrou HEFR M20 emb. S.Lock Cl.10 HEFR M20 Flg nut Gr.10 ZNBL
20	3	VJ 320	Ecrou frein std H M 8 - 8 ZNBL Nyloc nut std H M 8 - 8 ZNBL
21	4	VJ 409	Ecrou Hm M30 - 8 ZNBL Nut Hm M30 - 8 ZNBL
22	3	VK 502	Rondelle plate MU8 ZNBL Flat washer MU8 ZNBL
23	7	VK 513	Rondelle plate MU30 ZNBL Flat washer MU30 ZNBL
24	1	WH 149	Tube porte documents Documents support tube



*Châssis central 230*  
*Central frame 230*

<i>Index</i>	<i>Quantité</i>	<i>Reference</i>	<i>Designation</i>
1	1	6 432 524	Châssis central 230 Central frame 230
2	8	M260038	Bague acier - D:38x30x15mm Steel bushing - D:38x30x15mm

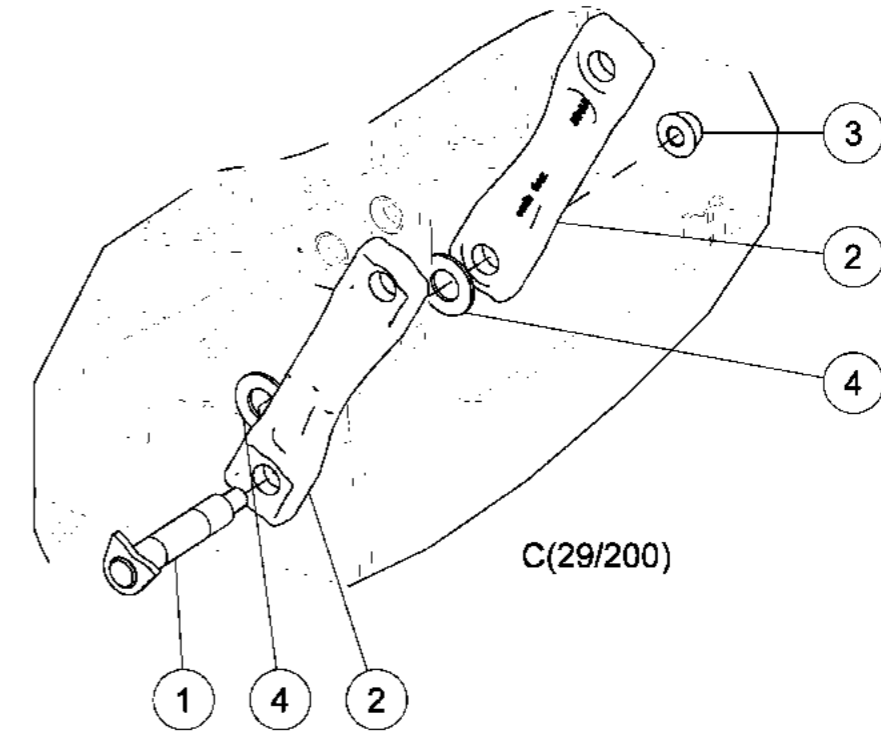
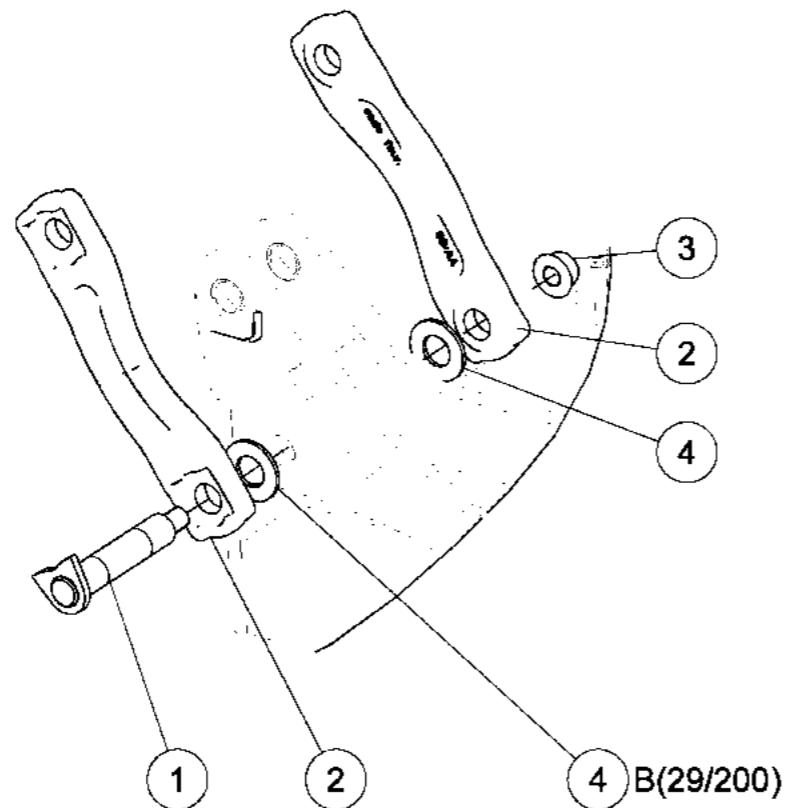
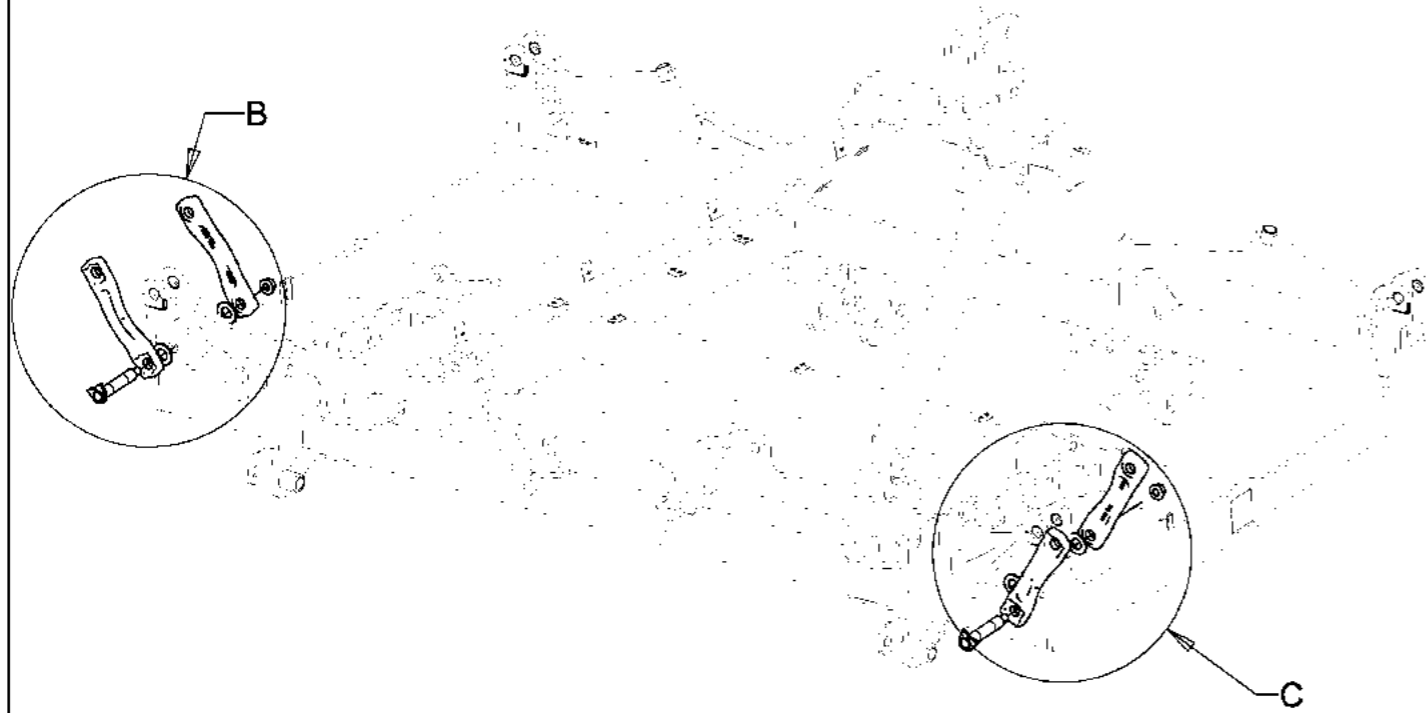


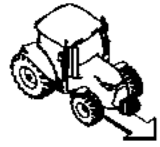


*Châssis central 230*

*Central frame 230*

Index	Quantite	Reference	Designation
1	2	6 432 746	Axe soude Du30 Lst169 Lu141 Weld axle Ø30 Ut1169 U1141
2	4	6 920 171	Bielle EA278 - Ø30 Rod EA278 - Ø30
3	2	VJ 145	Ecrou HEFR M20 emb. S.Lock Cl.10 HEFR M20 Flg nut Gr.10 ZNBL
4	4	VK 513	Rondelle plate MU30 ZNBL Flat washer MU30 ZNBL

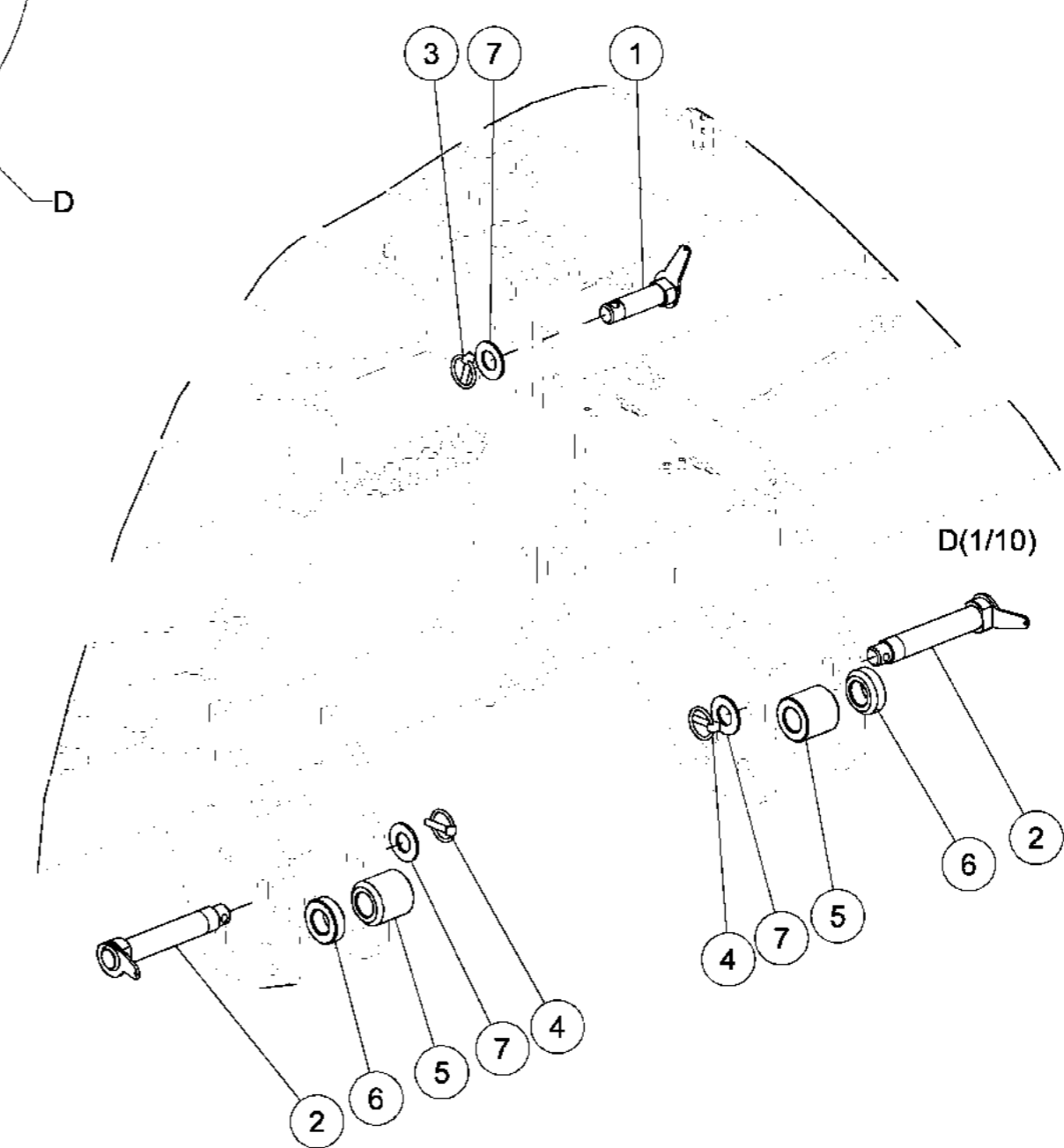
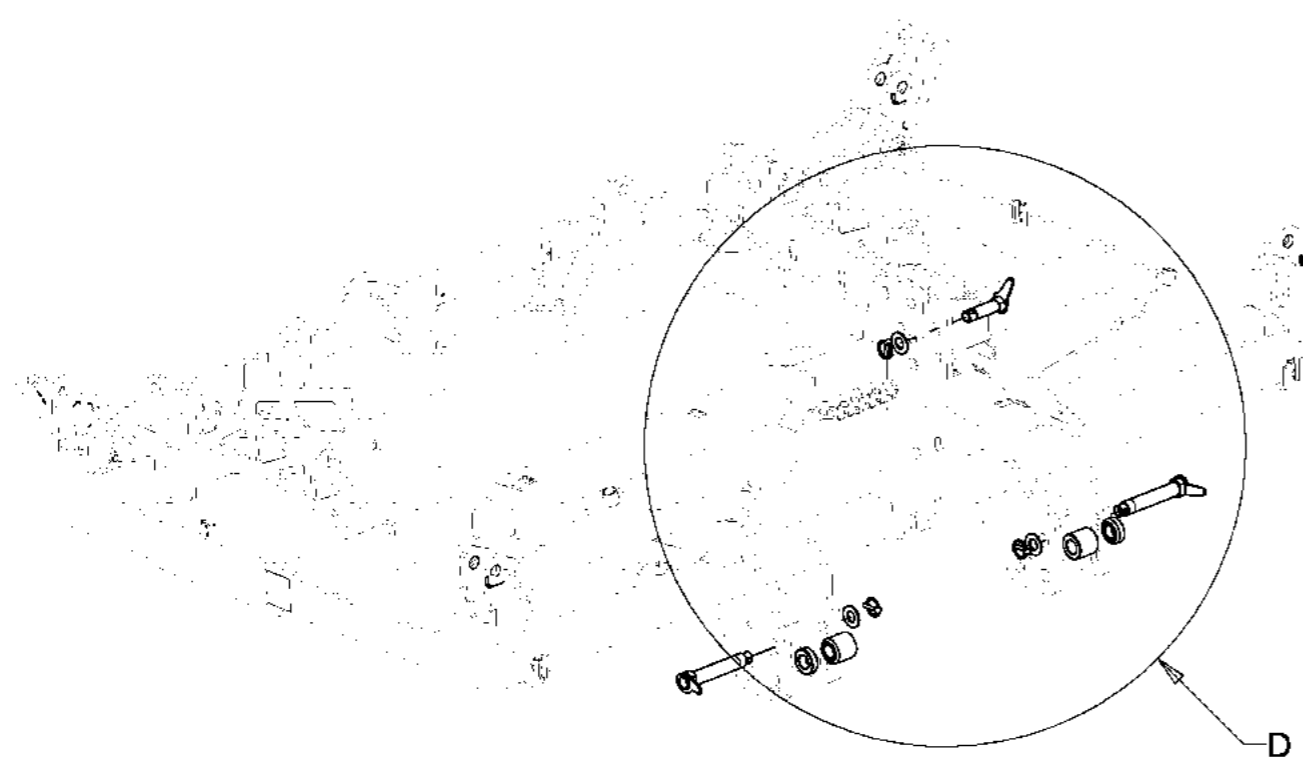




*Châssis central 230*

*Central frame 230*

Index	Quantite	Reference	Designation
1	1	6 432 860	Broche attelage 3 point montée 3 point linkage pin
2	2	6 432 862	Broche att. Inf. CAT III N & III monté Inferior hitch pin CAT III N & III
3	1	6 432 863	Goupille clips DIN 10x45 + chaîne 20 maillons Clips pin DIN 10 x 45 + chain 20 links
4	2	6 432 864	Goupille Clips DIN 10x45 + chaîne 8 maillons Clips pin DIN 10x45 + chain 8 links
5	2	6258.13.15	Douille d'attelage Lg:70mm Hitch spacer length 70mm
6	2	6258.13.16	Douille d'attelage Lg:25mm Hitch spacer length 25mm
7	7	VK 513	Rondelle plate MU30 ZNBL Flat washer MU30 ZNBL

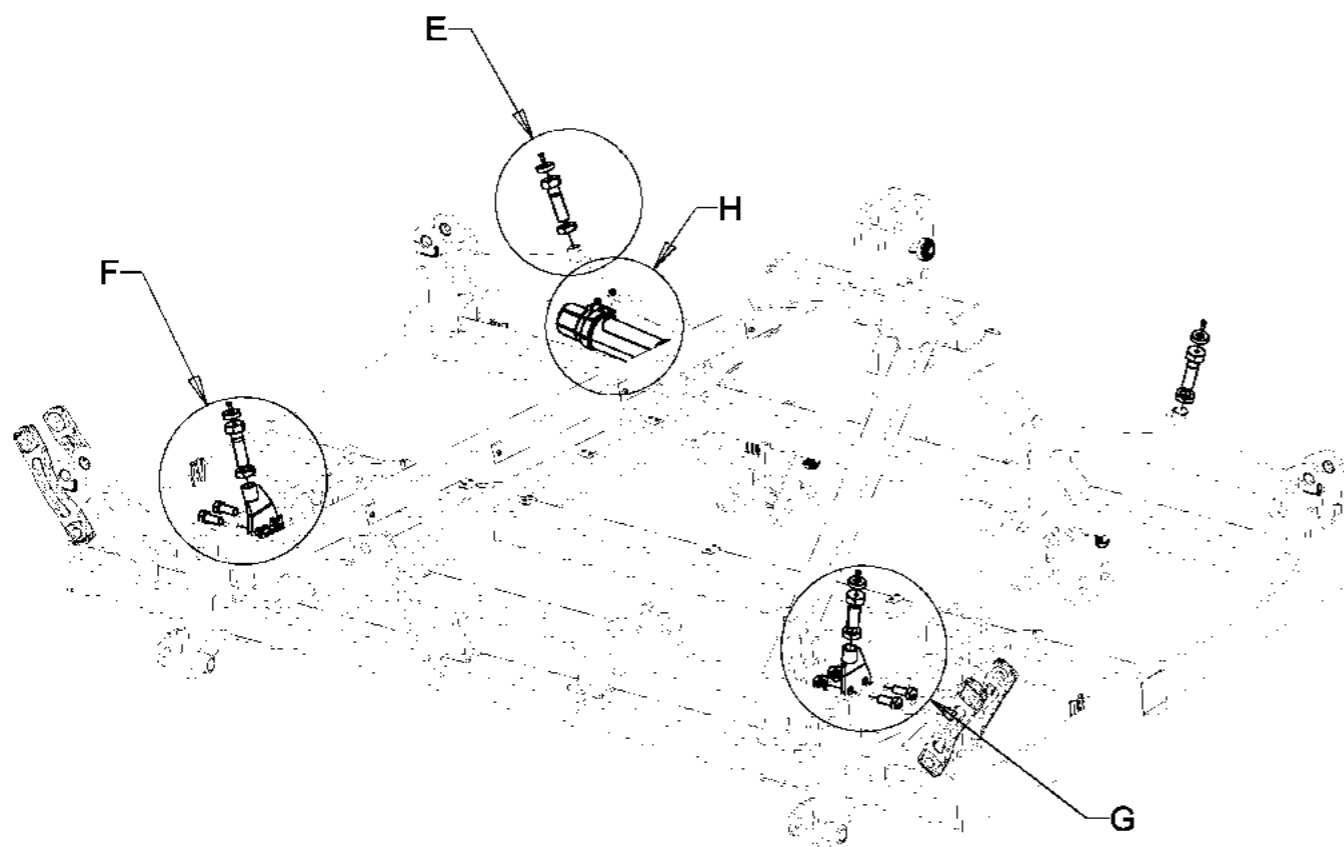


D(1/10)

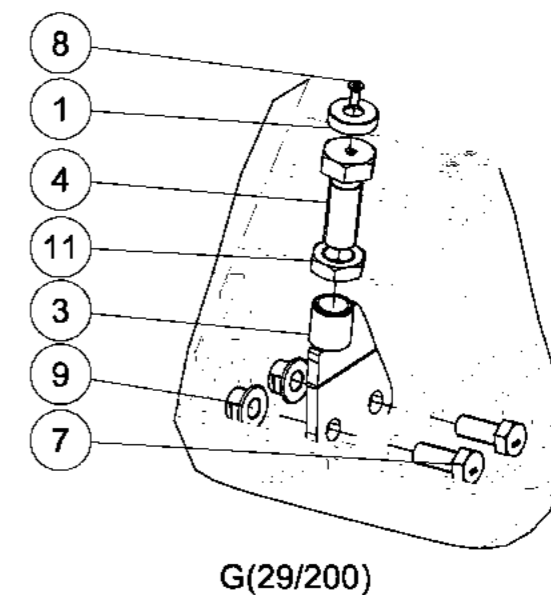
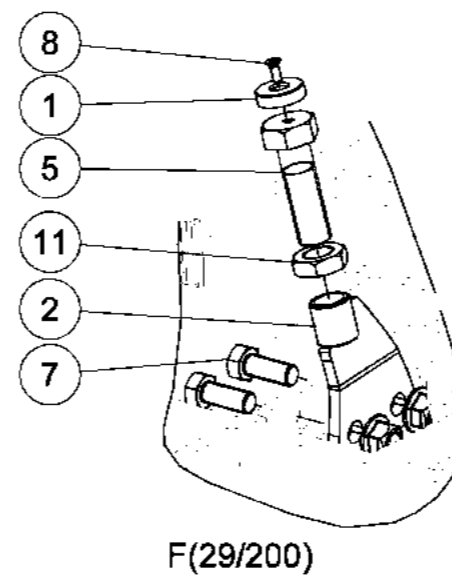
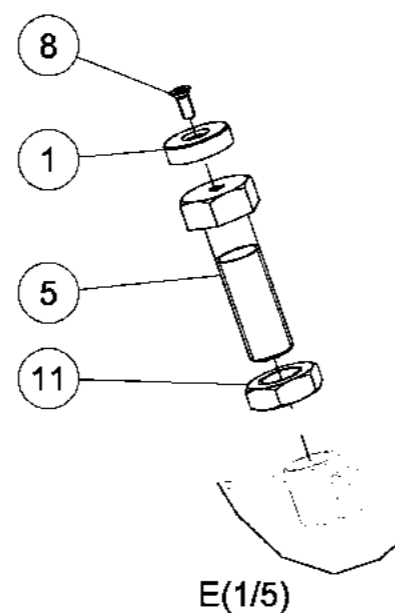
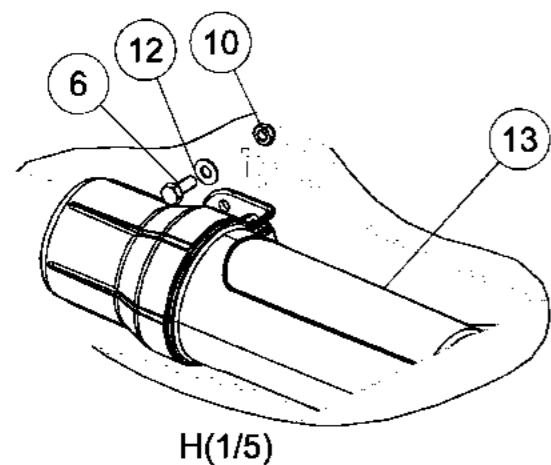


*Châssis central 230*

*Central frame 230*

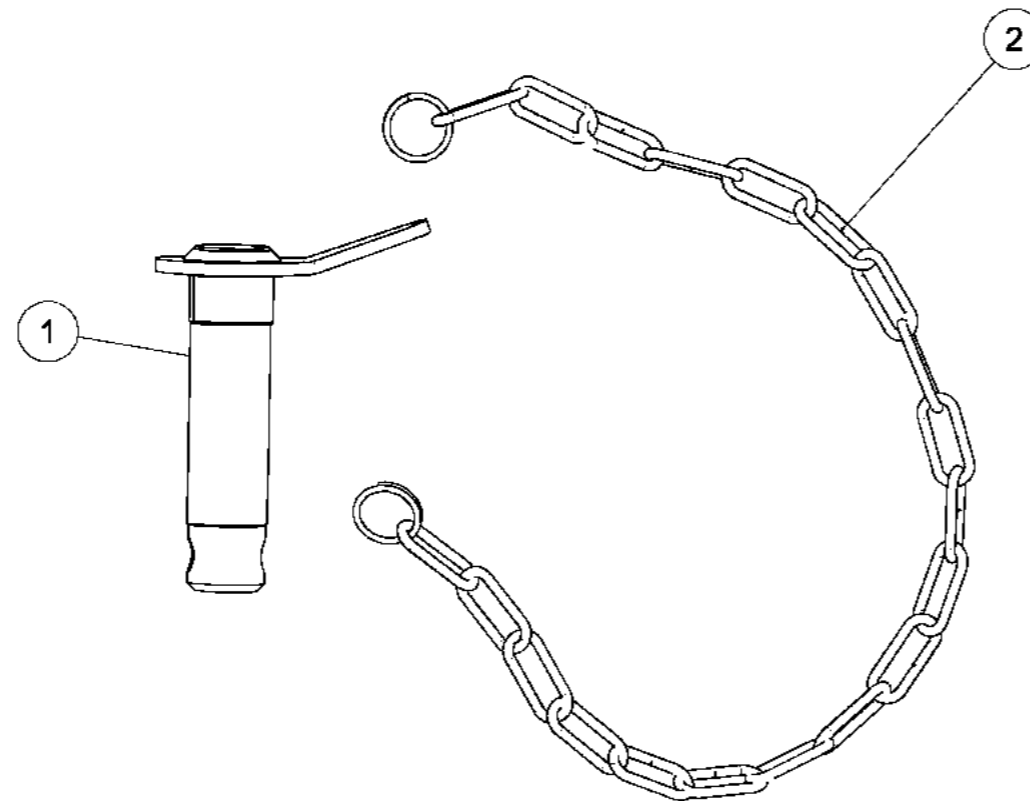


Index	Quantité	Reference	Designation
1	4	6 432 523 A	Butée de repliage Folding stop
2	1	6 432 715	Tole butée repliage Stop folding sheet metal
3	1	6 432 716	Tole butée repliage Stop folding sheet metal
4	1	6 432 727	Vis butée repliage Stop folding screw
5	3	6 432 728	Vis de butée de repliage Screw of stop folding
6	3	VI 27 04	Vis H M8x 20 - 8.8 ZNBL Screw H M8x 20 - 8.8 ZNBL
7	4	VI 33 03	Vis H M20x 50 - 8.8 ZNBL Screw H M20x 50 - 8.8 ZNBL
8	4	VI 49 12	Vis FHC M8x 20 - 10.9 ZNBL Screw FHC M8x 20 - 10.9 ZNBL
9	6	VJ 145	Ecrou HEFR M20 emb. S.Lock Cl.10 HEFR M20 Flg nut Gr.10 ZNBL
10	3	VJ 320	Ecrou frein std H M 8 - 8 ZNBL Nyloc nut std H M 8 - 8 ZNBL
11	4	VJ 409	Ecrou Hm M30 - 8 ZNBL Nut Hm M30 - 8 ZNBL
12	3	VK 502	Rondelle plate MU8 ZNBL Flat washer MU8 ZNBL
13	1	WH 149	Tube porte documents Documents support tube



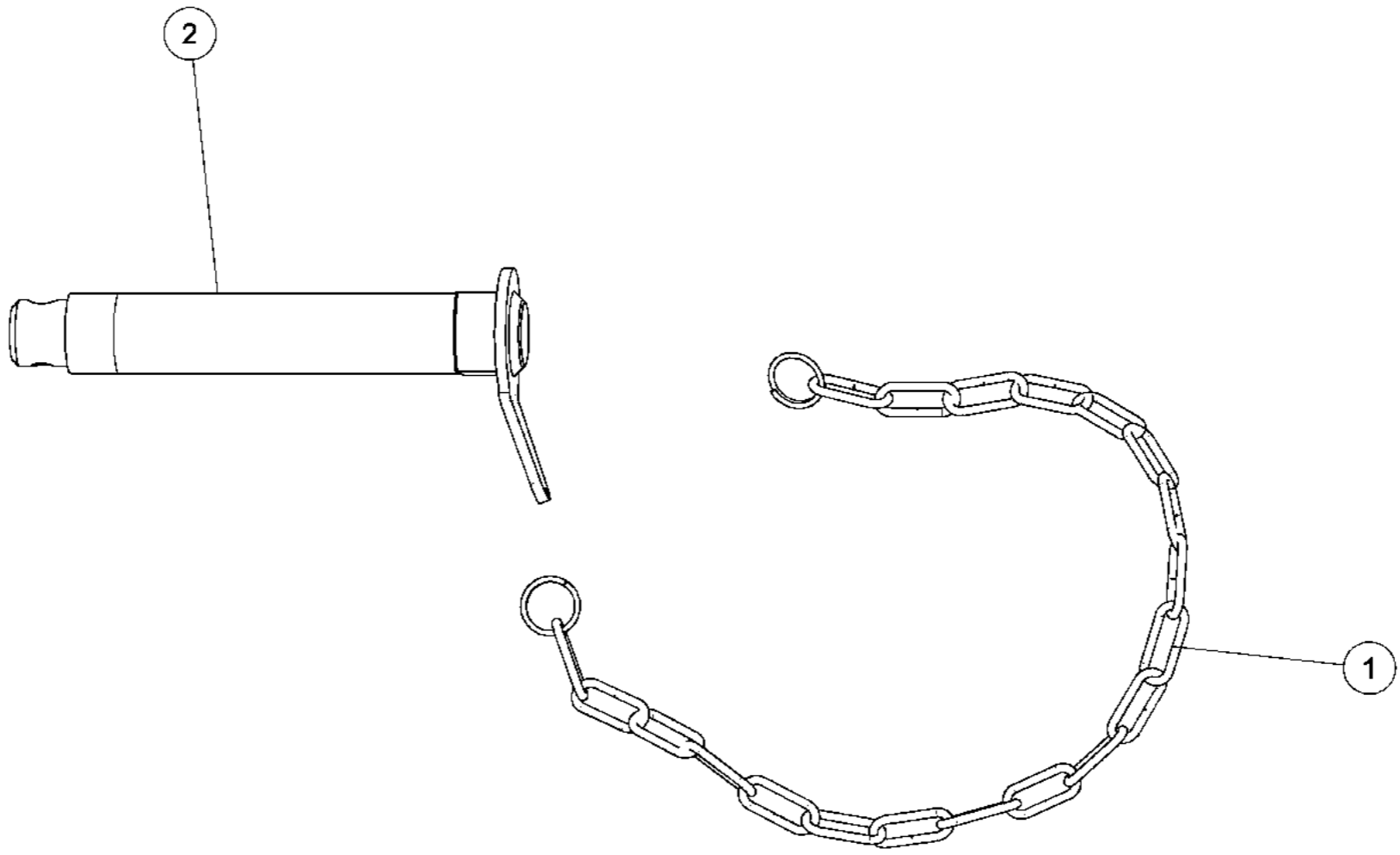
*Broche attelage 3 point montée*  
*3 point linkage pin*

<i>Index</i>	<i>Quantite</i>	<i>Reference</i>	<i>Designation</i>
1	1	1 122 873	Broche d'attelage 3em point Top link pin
2	1	6 432 861	Chaine longue 20 maillons + anneaux 20 link chain + ring



*Broche att. Inf. CAT III N & III monté*  
*Inferior hitch pin CAT III N & III*

<i>Index</i>	<i>Quantite</i>	<i>Reference</i>	<i>Designation</i>
1	1	6 432 861	Chaine longue 20 maillons + anneaux 20 link chain + ring
2	1	6 640 222	Broche d'attelage inf cat. III N & III Lower link pin cat. III N et III

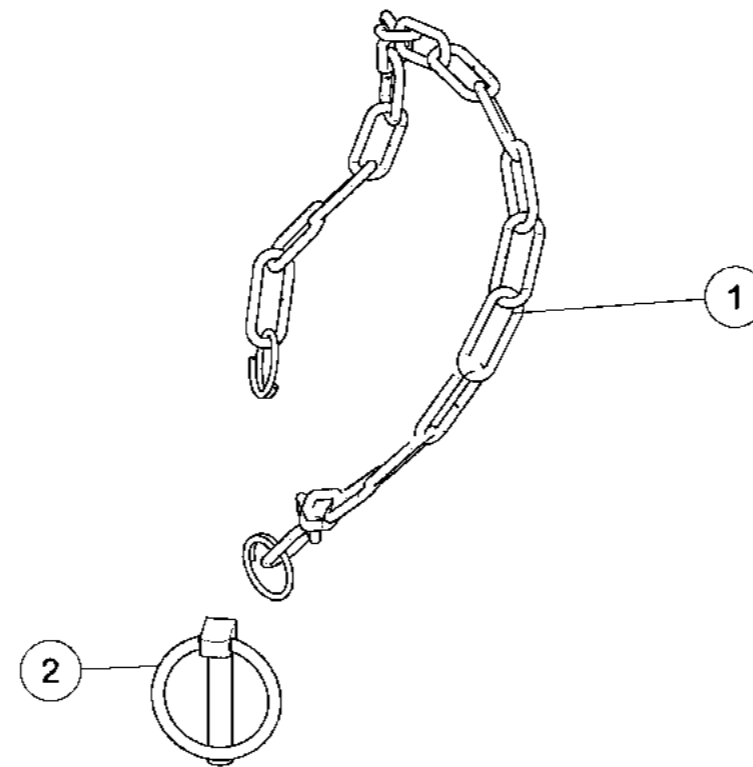




*Goupille clips DIN 10x45 + chaine 20 maillons*

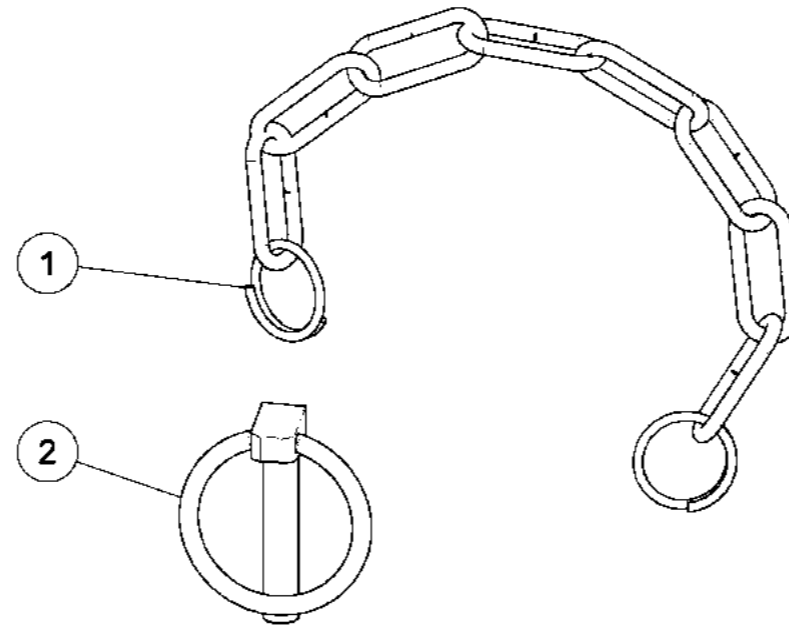
*Clips pin DIN 10 x 45 + chain 20 links*

<i>Index</i>	<i>Quantite</i>	<i>Reference</i>	<i>Designation</i>
1	1	6 432 861	Chaine longue 20 maillons + anneaux 20 link chain + ring
2	1	VL 105	Goupille "Clips-surete" Dia10 Z Lynch pin "Clips-surete" Dia10 Z



*Goupille Clips DIN 10x45 + chaine 8 maillons**Clips pin DIN 10x45 + chain 8 links*

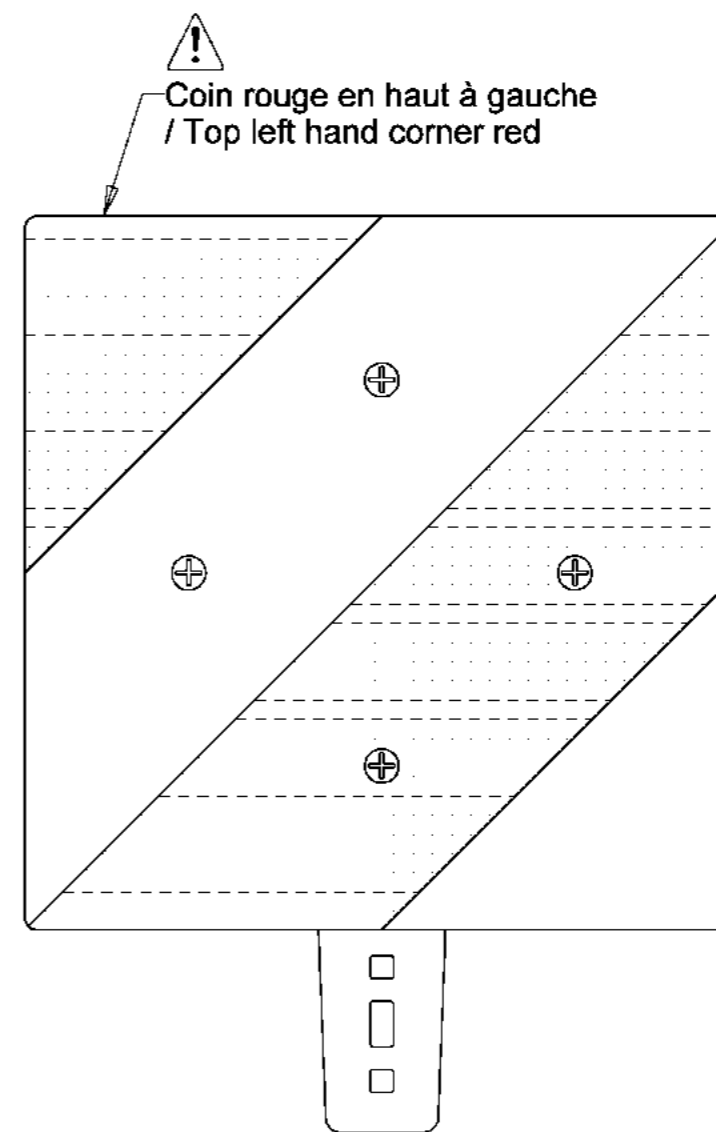
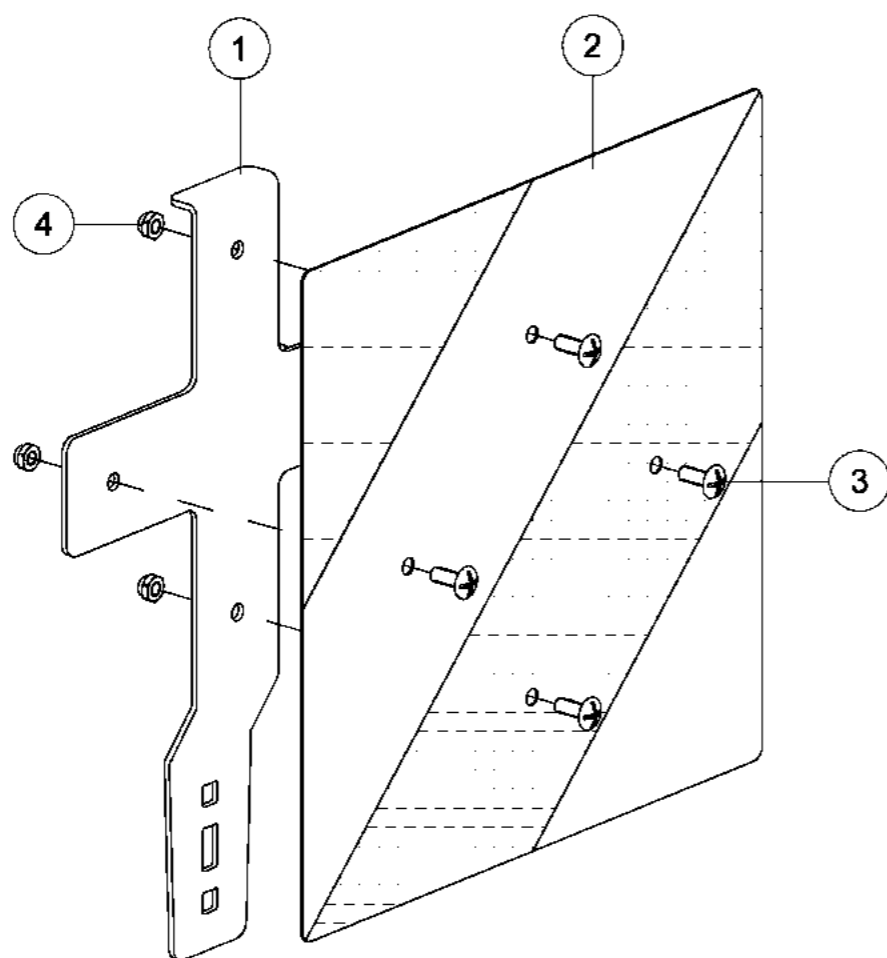
<i>Index</i>	<i>Quantite</i>	<i>Reference</i>	<i>Designation</i>
1	1	6 432 865	Chaine courte 8 maillons + anneaux 8 link chain + ring
2	1	VL 105	Goupille "Clips-surete" Dia10 Z Lynch pin "Clips-surete" Dia10 Z



*Ensemble réfléchissant 282x282 VG*

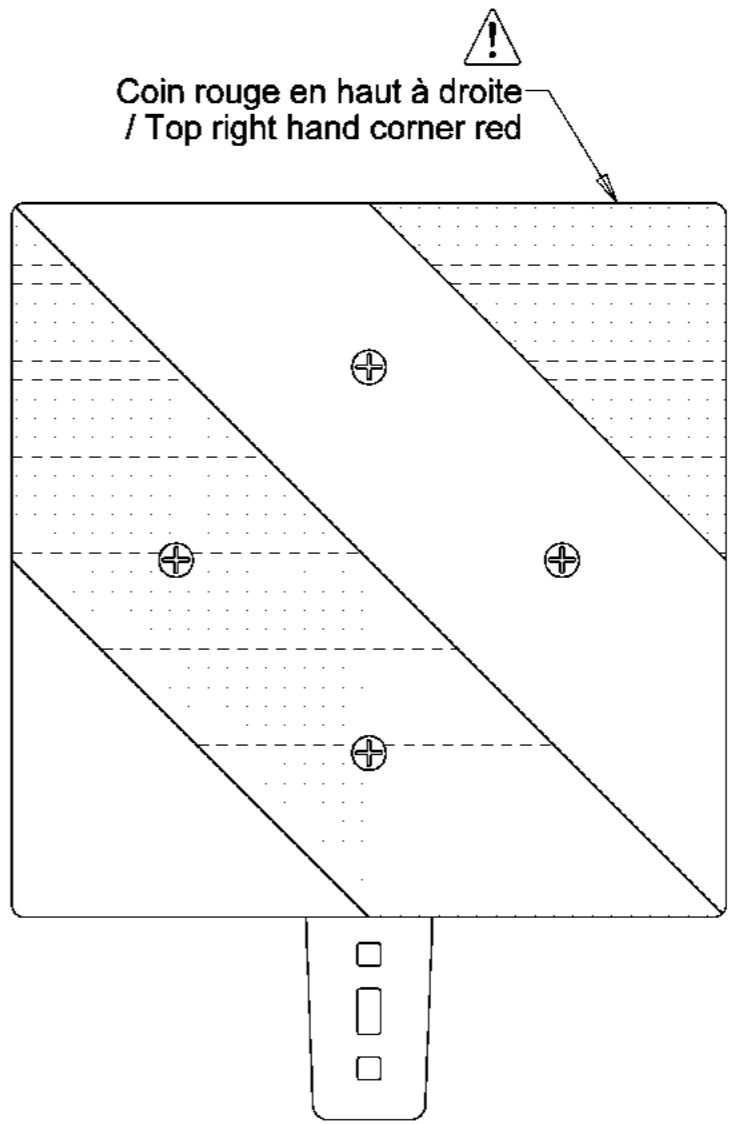
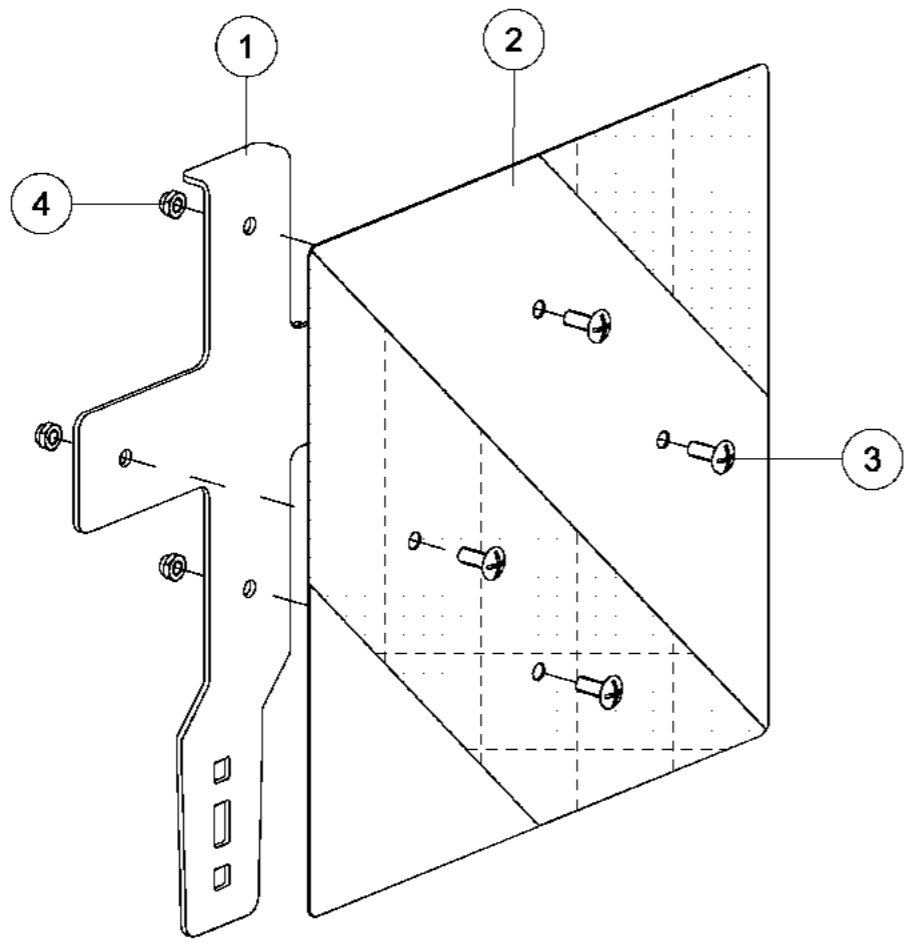
*Reflective kit 282x282 LV*

<i>Index</i>	<i>Quantité</i>	<i>Reference</i>	<i>Designation</i>
1	1	1 221 243	Support plaque réfléchissante Reflective plate support
2	1	7 018 300	Plaque réfléchissante DIN/TPESC Reflecting plate DIN/TPESC
3	4	VI 15 31	Vis TBF "Poelier" M6x16 Screw TBF "Poelier" M6x16
4	4	VJ 340	Écrou frein std H M 6 - 8 ZNBL Nyloc nut std H M 6 - 8 ZNBL



*Ensemble réfléchissant 282x282 VD*  
*Reflective kit 282x282 RV*

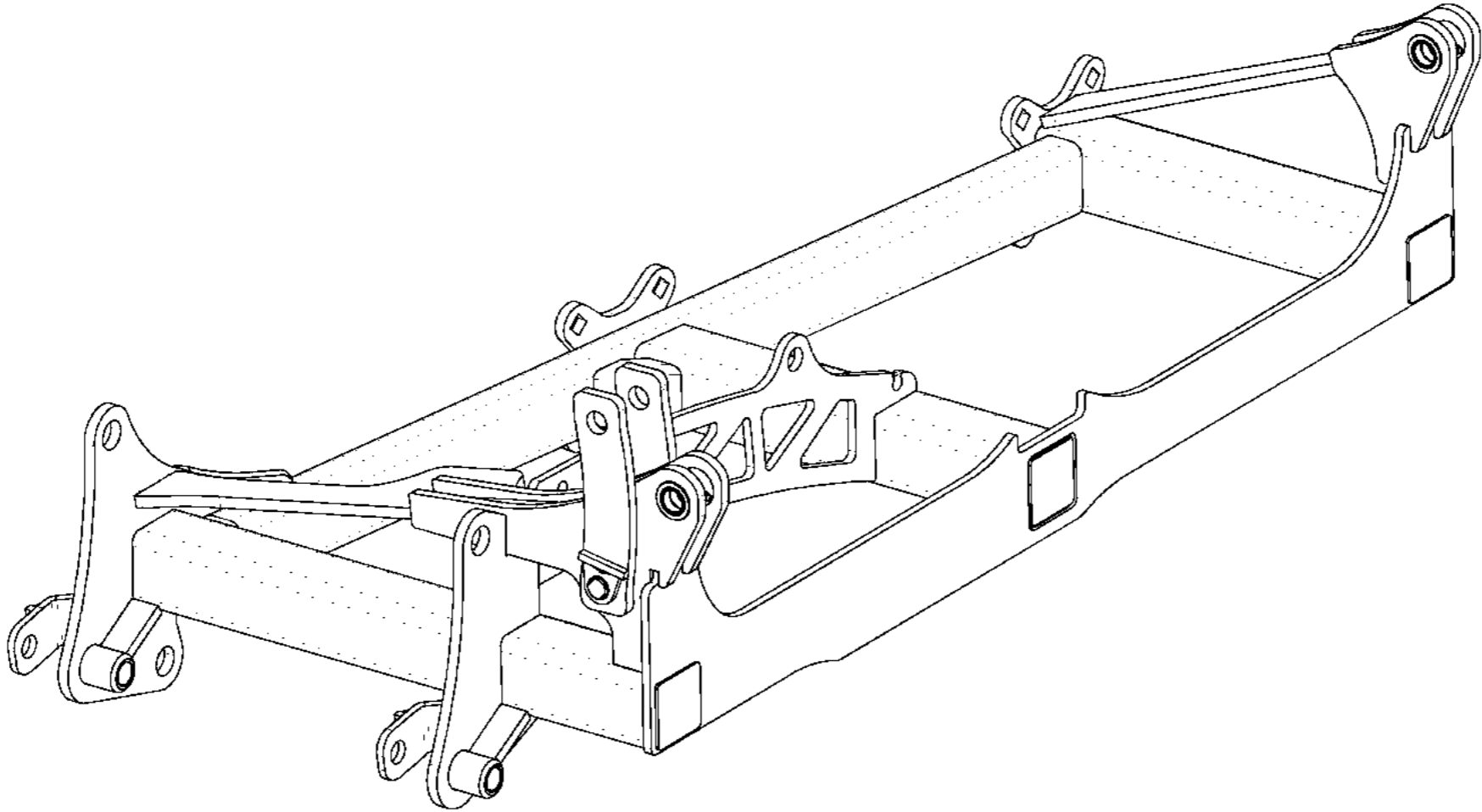
<i>Index</i>	<i>Quantité</i>	<i>Reference</i>	<i>Designation</i>
1	1	1 221 243	Support plaque réfléchissante Reflective plate support
2	1	7 018 300	Plaque réfléchissante DIN/TPESC Reflecting plate DIN/TPESC
3	4	VI 15 31	Vis TBF "Poelier" M6x16 Screw TBF "Poelier" M6x16
4	4	VJ 340	Écrou frein std H M 6 - 8 ZNBL Nyloc nut std H M 6 - 8 ZNBL





*Aile gauche 230*  
*Left wing 230*

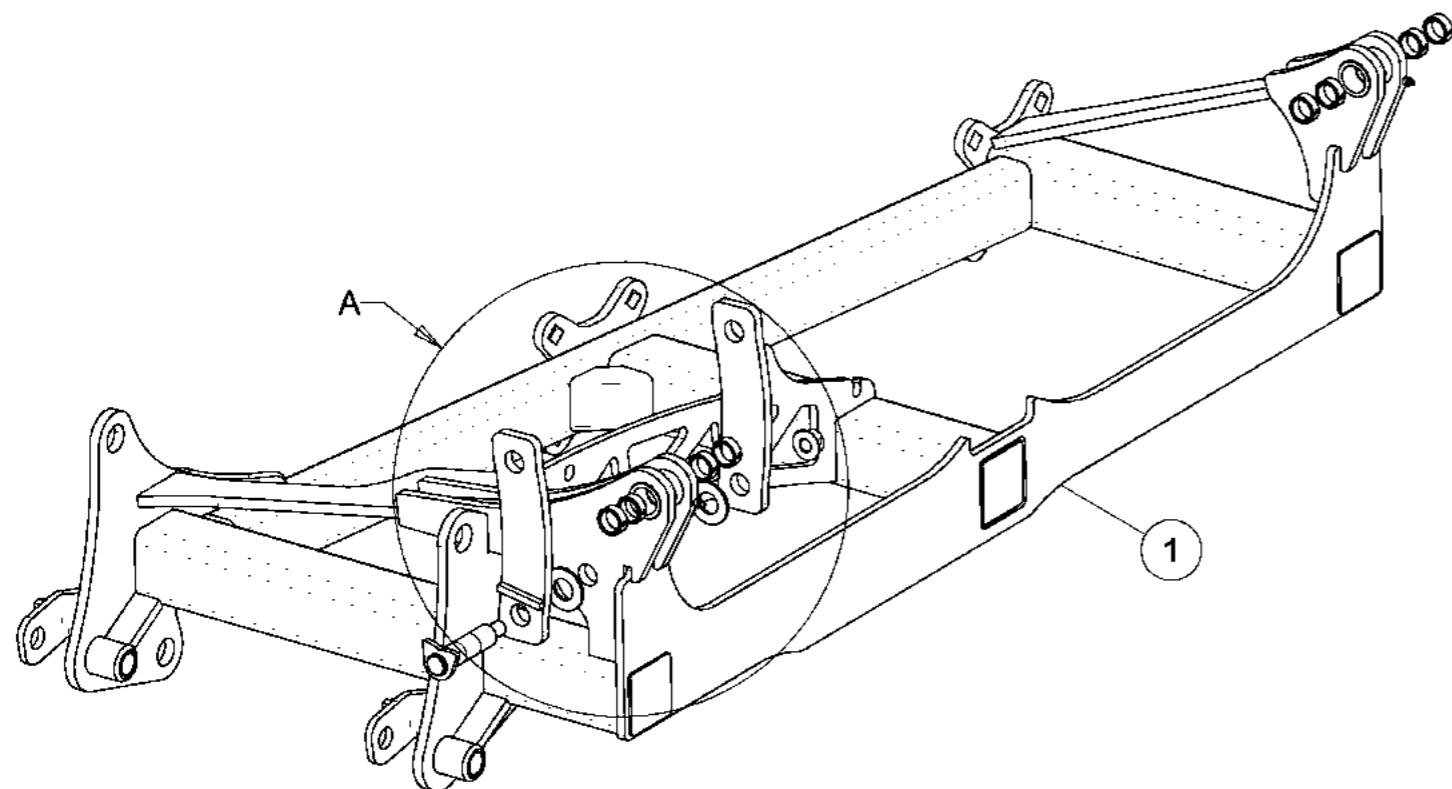
<i>Index</i>	<i>Quantite</i>	<i>Reference</i>	<i>Designation</i>
1	1	6 432 534	aile gauche Left wing
2	1	6 432 747	Axe soude Du30 Lst133 Lu105 Axle D:30 - Lg:133-105mm
3	1	6 432 750	Bielle de repliage Folding rod
4	1	6 432 750 A	Bielle courte repliage Short folding rod
5	8	M260038	Bague acier - D:38x30x15mm Steel bushing - D:38x30x15mm
6	1	VJ 145	Ecrou HEFR M20 emb. S.Lock Cl.10 HEFR M20 Flg nut Gr.10 ZNBL
7	2	VK 513	Rondelle plate MU30 ZNBL Flat washer MU30 ZNBL
8	2	VM 205	Graisser droit - M10, pas150 Grease nipple - M10, thread150



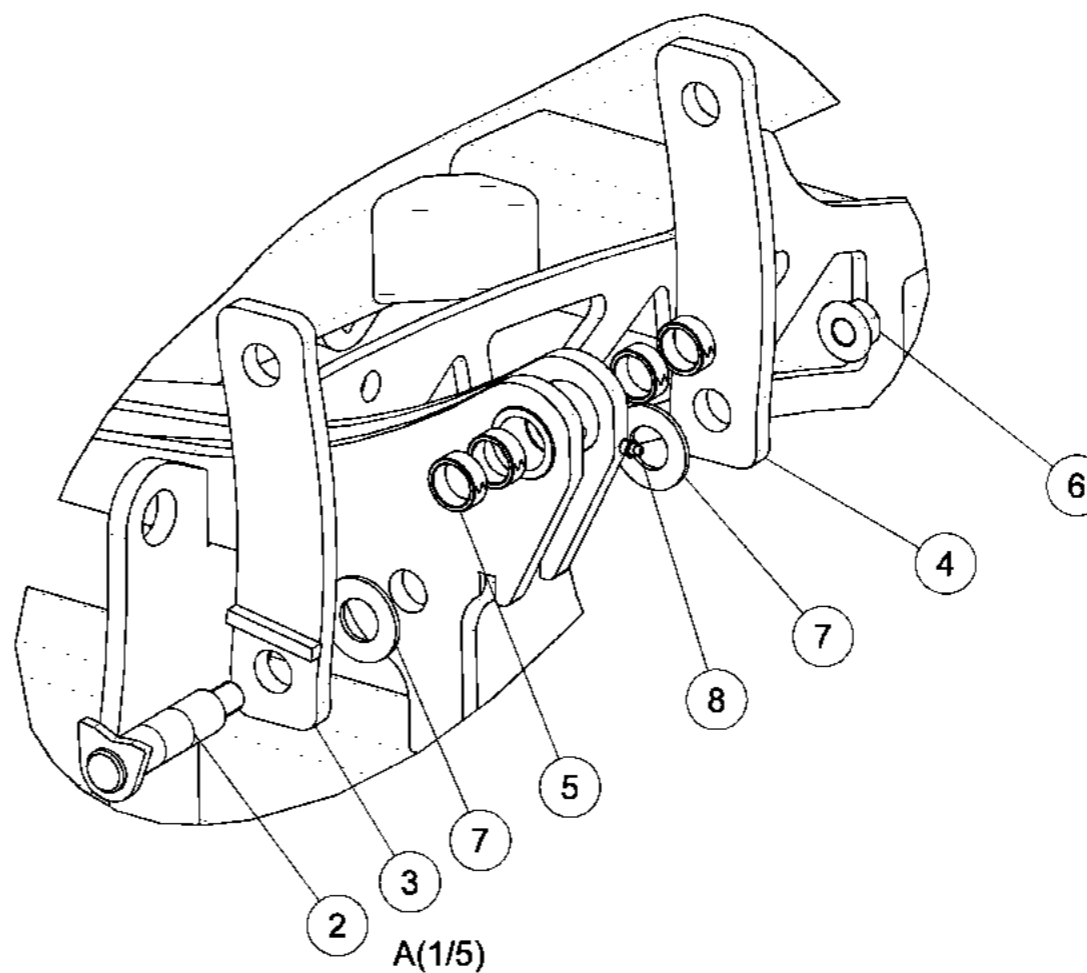


*Aile gauche 230*

*Left wing 230*

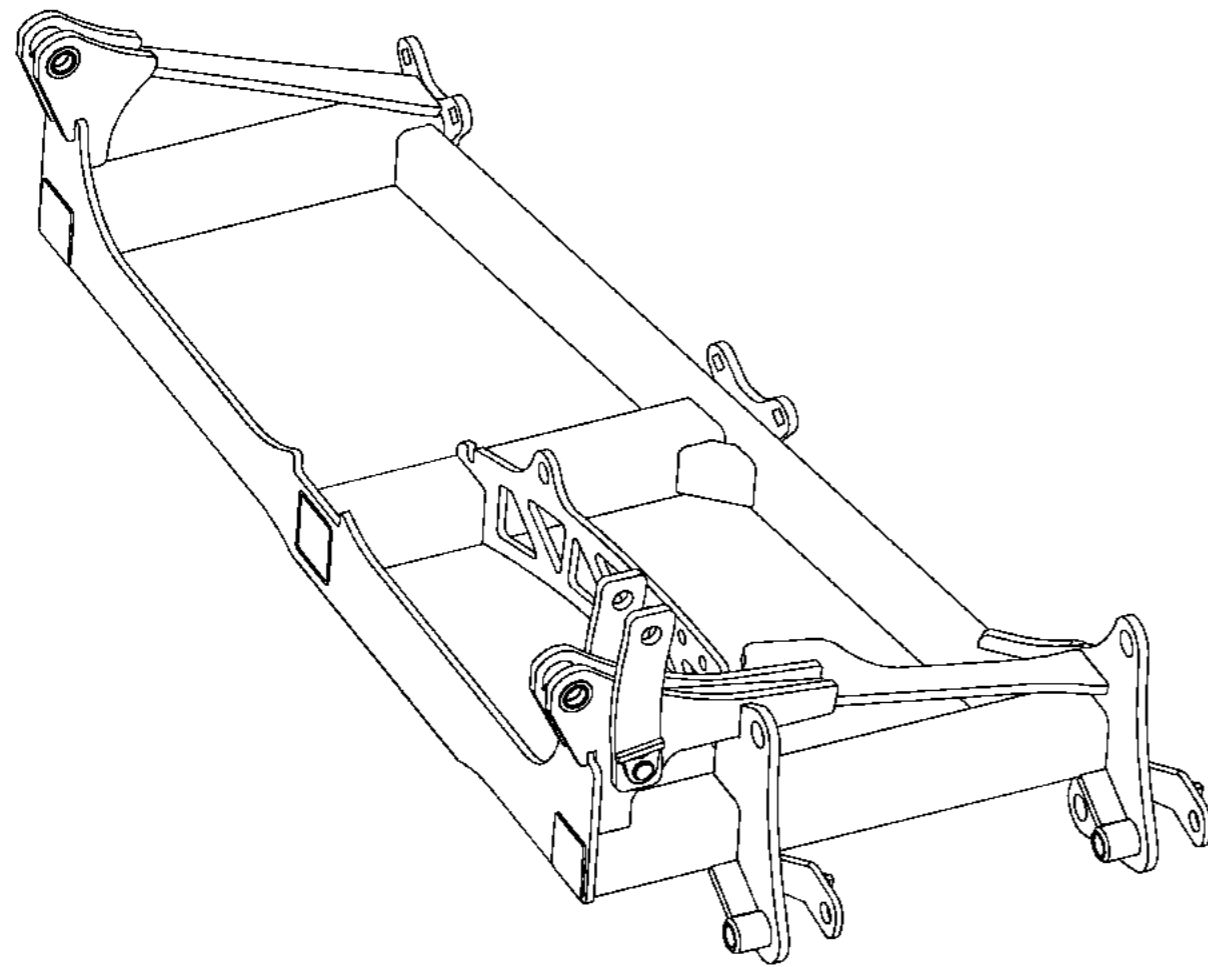


Index	Quantite	Reference	Designation
1	1	6 432 534	aile gauche Left wing
2	1	6 432 747	Axe soude Du30 Lst133 Lu105 Axle D:30 - Lg:133-105mm
3	1	6 432 750	Bielle de repliage Folding rod
4	1	6 432 750 A	Bielle courte repliage Short folding rod
5	8	M260038	Bague acier - D:38x30x15mm Steel bushing - D:38x30x15mm
6	1	VJ 145	Ecrou HEFR M20 emb. S.Lock Cl.10 HEFR M20 Flg nut Gr.10 ZNBL
7	2	VK 513	Rondelle plate MU30 ZNBL Flat washer MU30 ZNBL
8	2	VM 205	Graisseur droit - M10, pas150 Grease nipple - M10, thread150





*Aile droite 230*  
*Right wing 230*

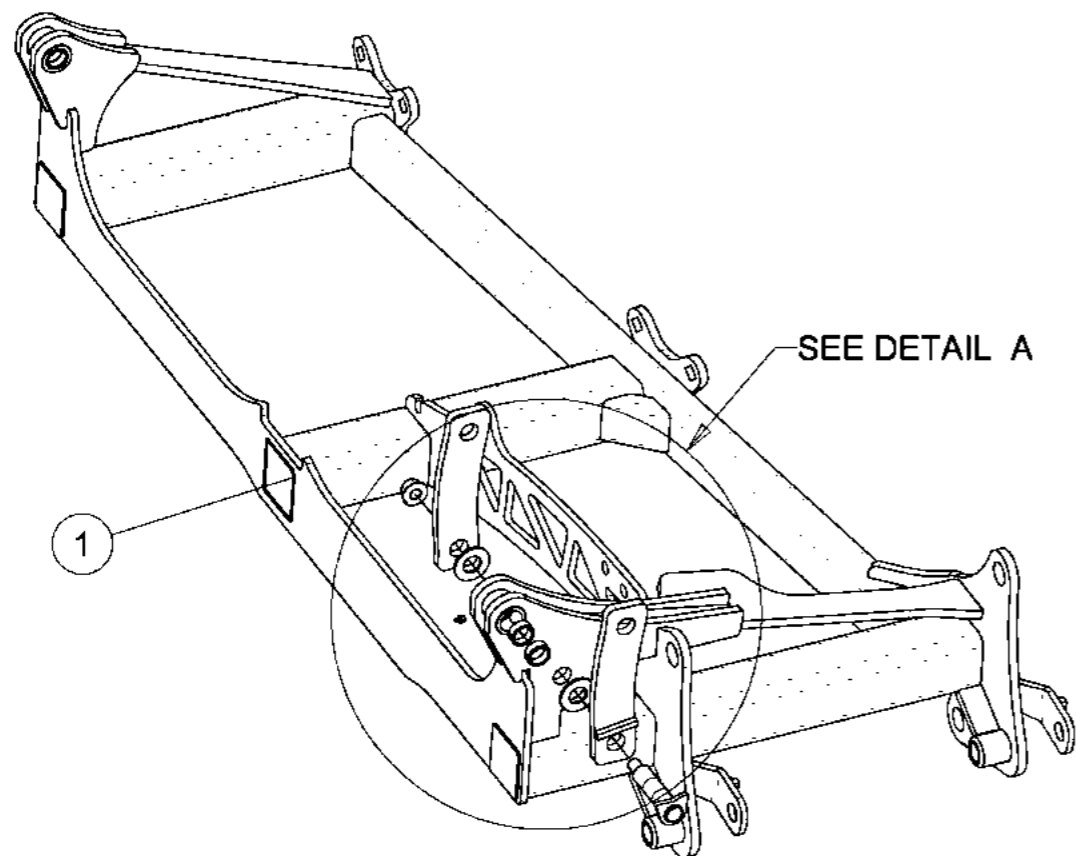


<i>Index</i>	<i>Quantite</i>	<i>Reference</i>	<i>Designation</i>
1	1	6 432 553	aile droite Right wing
2	1	6 432 747	Axe soude Du30 Lst133 Lu105 Axle D:30 - Lg:133-105mm
3	1	6 432 750 A	Bielle courte repliage Short folding rod
4	1	6 432 751	Bielle de repliage Folding rod
5	8	M260038	Bague acier - D:38x30x15mm Steel bushing - D:38x30x15mm
6	1	VJ 145	Ecrou HEFR M20 emb. S.Lock Cl.10 HEFR M20 Flg nut Gr.10 ZNBL
7	2	VK 513	Rondelle plate MU30 ZNBL Flat washer MU30 ZNBL
8	2	VM 205	Graisser droit - M10, pas150 Grease nipple - M10, thread150

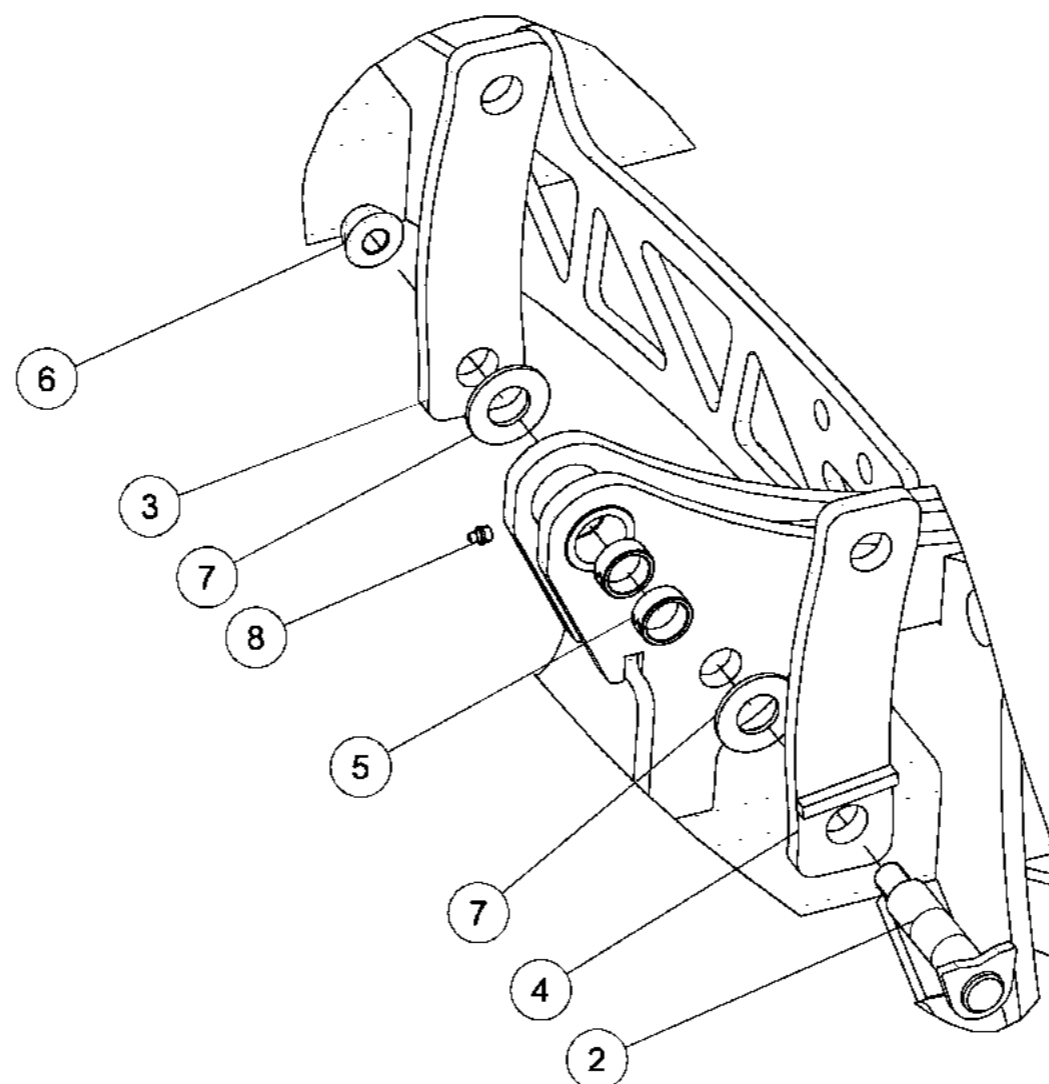


*Aile droite 230*

*Right wing 230*



Index	Quantite	Reference	Designation
1	1	6 432 553	aile droite Right wing
2	1	6 432 747	Axe soude Du30 Lst133 Lu105 Axle D:30 - Lg:133-105mm
3	1	6 432 750 A	Bielle courte repliage Short folding rod
4	1	6 432 751	Bielle de repliage Folding rod
5	8	M260038	Bague acier - D:38x30x15mm Steel bushing - D:38x30x15mm
6	1	VJ 145	Ecrou HEFR M20 emb. S.Lock Cl.10 HEFR M20 Flg nut Gr.10 ZNBL
7	2	VK 513	Rondelle plate MU30 ZNBL Flat washer MU30 ZNBL
8	2	VM 205	Graisser droit - M10, pas150 Grease nipple - M10, thread150

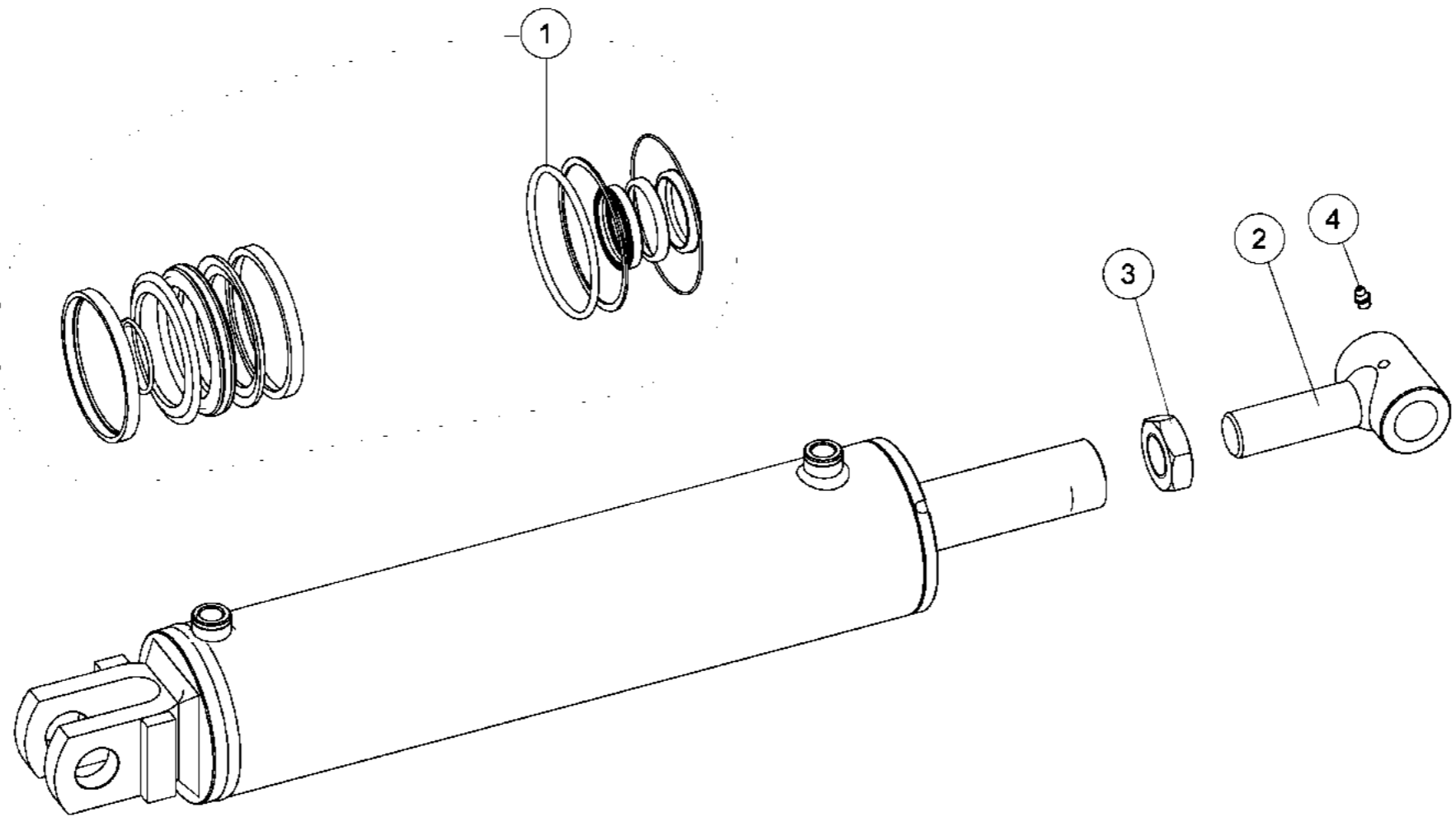


DETAIL A  
SCALE 1/5

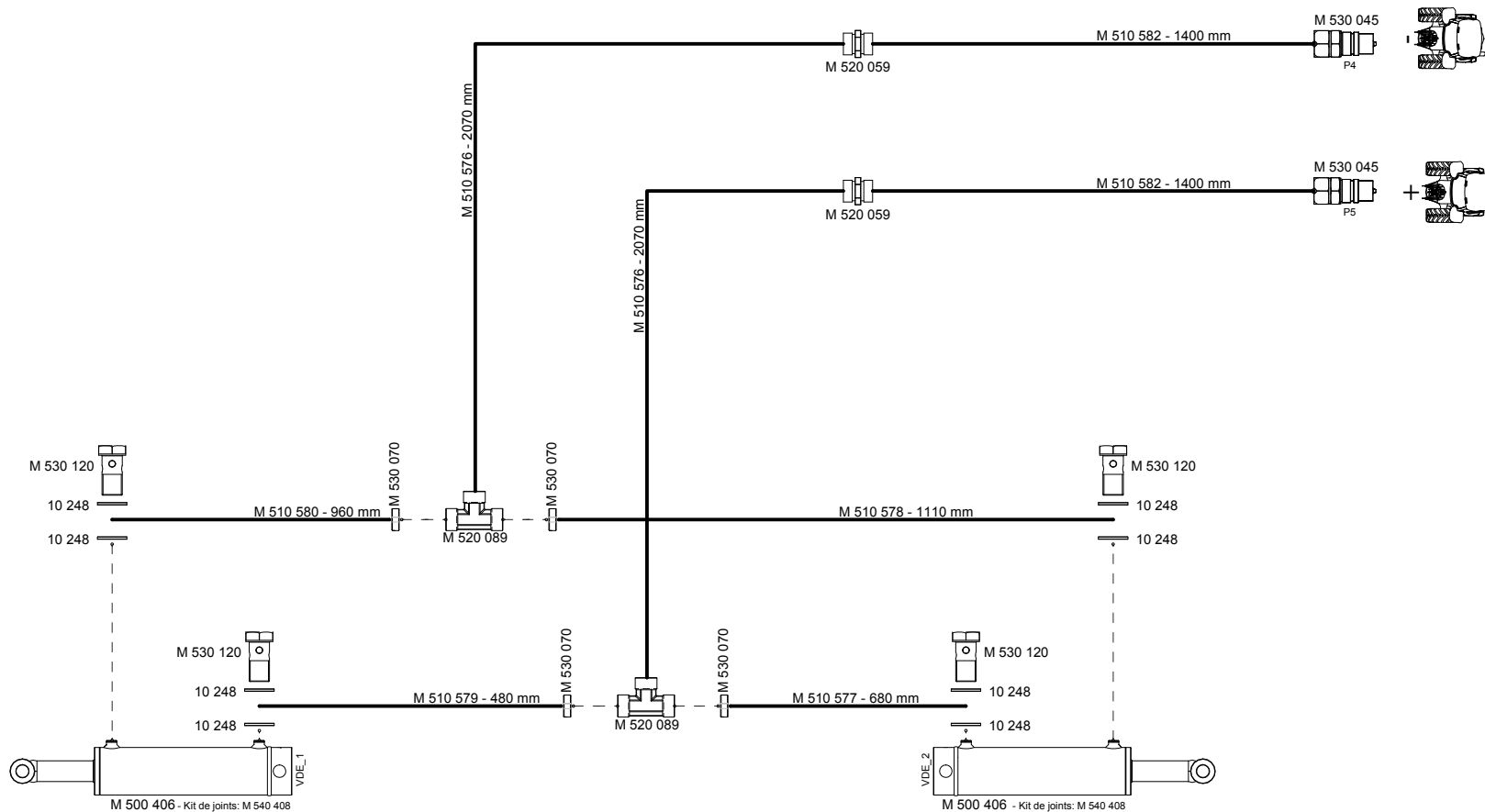


*Vérin DE 100x45 C392 EAF681*  
*DA cylinder 100x45 S392 LBA681*

<i>Index</i>	<i>Quantité</i>	<i>Reference</i>	<i>Designation</i>
1	1	M 500 408	Jeu de joints / Vérin 100x45 Seals kit / Cylinder 100x45
2	1	M 500 409	Tenon de vérin Pin mounting
3	1	VJ 409	Ecrou Hm M30 - 8 ZNBL Nut Hm M30 - 8 ZNBL
4	1	VM 201	Graisseur droit - M8, pas125 Grease nipple - M8, thread125



N°	Qty	Reference	Designation	Designation	Flex. / Hose	Lq. / Length	Embouts / Pipe nozzles
1	8	10 248	BAGUE BS 17	Seal-ring BS 17	---	---	---
2	2	M 500 406	Véin DE 100x45C 392 EAF681	DA Cylinder 100x45S 392	---	---	---
3	2	M 510 576	FLEX 100R16 3/8" 2070mm E15/00 - E15/00	FLEX 100R16 3/8" 2070mm E15/00 - E15/00	FLEX 100R16 3/8"	2070 mm	E15/00 - E15/00
4	1	M 510 577	FLEX 100R16 3/8" 680mm E15/00 - Banjo 17	FLEX 100R16 3/8" 680mm E15/00 - Banjo 17	FLEX 100R16 3/8"	680 mm	E15/00 - Banjo 17
5	1	M 510 578	FLEX 100R16 3/8" 1110mm E15/00 - Banjo 17	FLEX 100R16 3/8" 1110mm E15/00 - Banjo 17	FLEX 100R16 3/8"	1110 mm	E15/00 - Banjo 17
6	1	M 510 579	FLEX 100R16 3/8" 480mm E15/90 - Banjo 17	FLEX 100R16 3/8" 480mm E15/90 - Banjo 17	FLEX 100R16 3/8"	480 mm	E15/90 - Banjo 17
7	1	M 510 580	FLEX 100R16 3/8" 960mm E15/90 - Banjo 17	FLEX 100R16 3/8" 960mm E15/90 - Banjo 17	FLEX 100R16 3/8"	960 mm	E15/90 - Banjo 17
8	2	M 510 582	FLEX 100R16 3/8" 1400mm E15/00 - MC1/2	FLEX 100R16 3/8" 1400mm E15/00 - MC1/2	FLEX 100R16 3/8"	1400 mm	E15/00 - MC1/2
9	2	M 520 059	Union 15L	Union coupling 15L	---	---	---
10	2	M 520 089	Raccord TE 15L Nu Usiné	TE coupling 15L milled	---	---	---
11	2	M 530 045	Valve à bille Push-Pull 1/2"	Push-Pull valve 1/2"	---	---	---
12	4	M 530 070	Restricteur de débit Ø 2,25mm	Flow rate restrictor Ø 2.25mm	---	---	---
13	4	M 530 120	Vis pour Banjo 17 - 3/8"G	Screw for Banjo 17 - 3/8"G	---	---	---



Commentaires : Mise à jour du schéma	
Indice : B	Fichier : M510707
Modifié par : BLIB	Modifié le : 07/06/2017

REFERENCE : M 510 583
DESIGNATION : Kit repliage CrP 2xxx
DESIGNATION : Folding hydraulic kit - CrP2xxx
Ce plan ne peut être utilisé, reproduit ou transmis à un tiers sans notre accord écrit préalable
FORMAT : A3

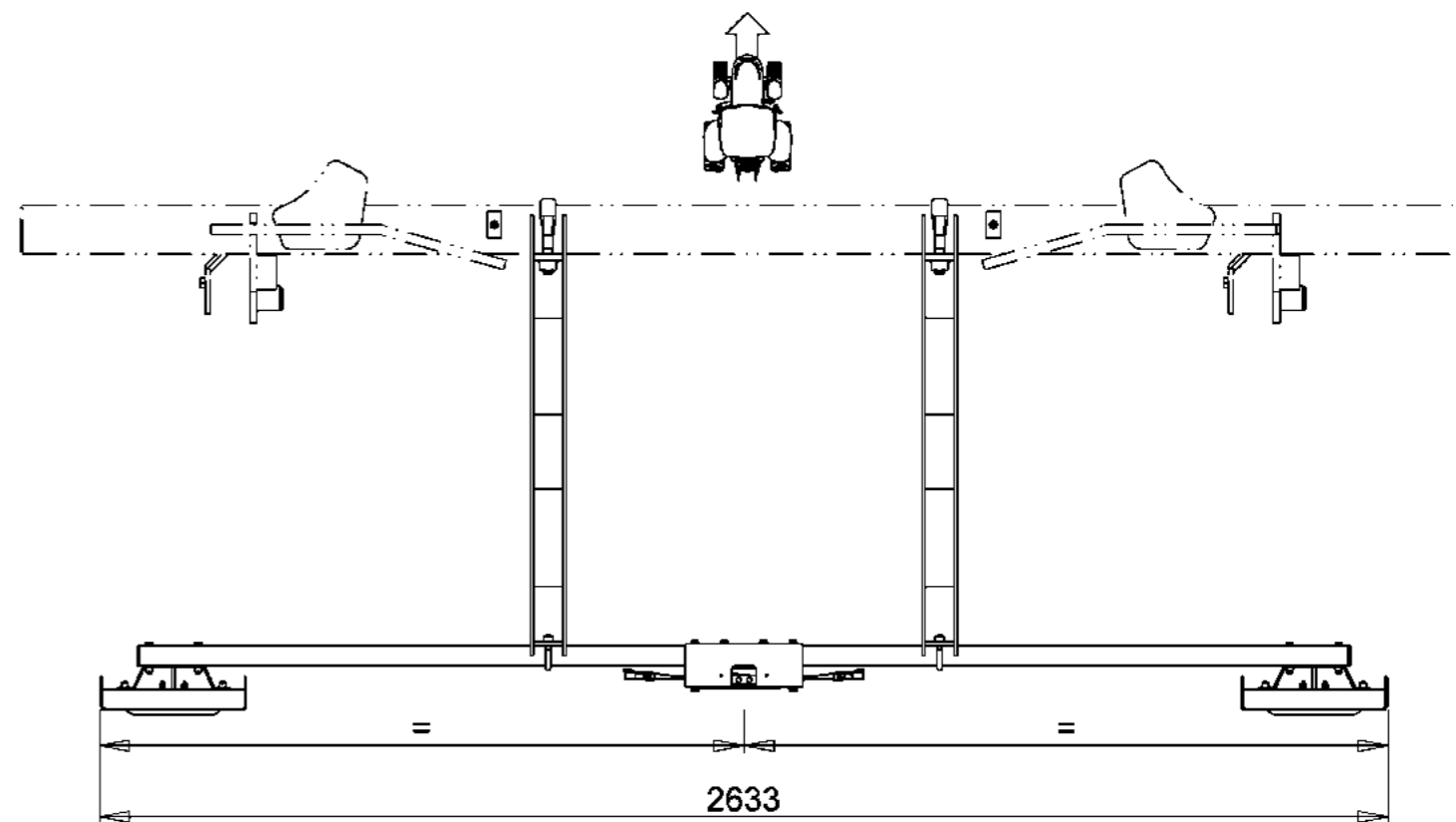
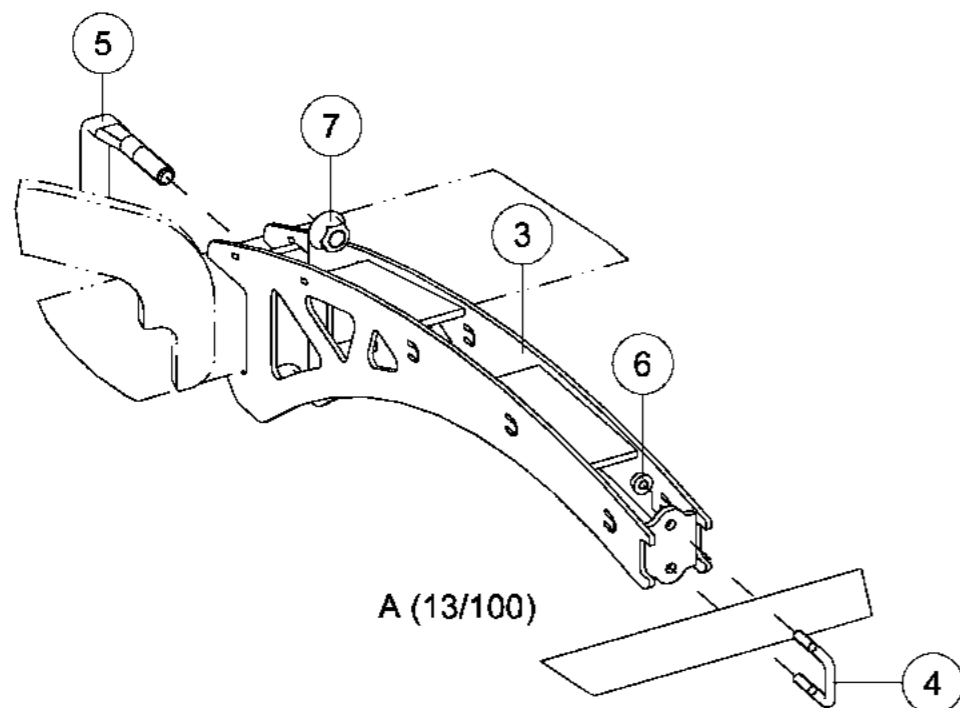
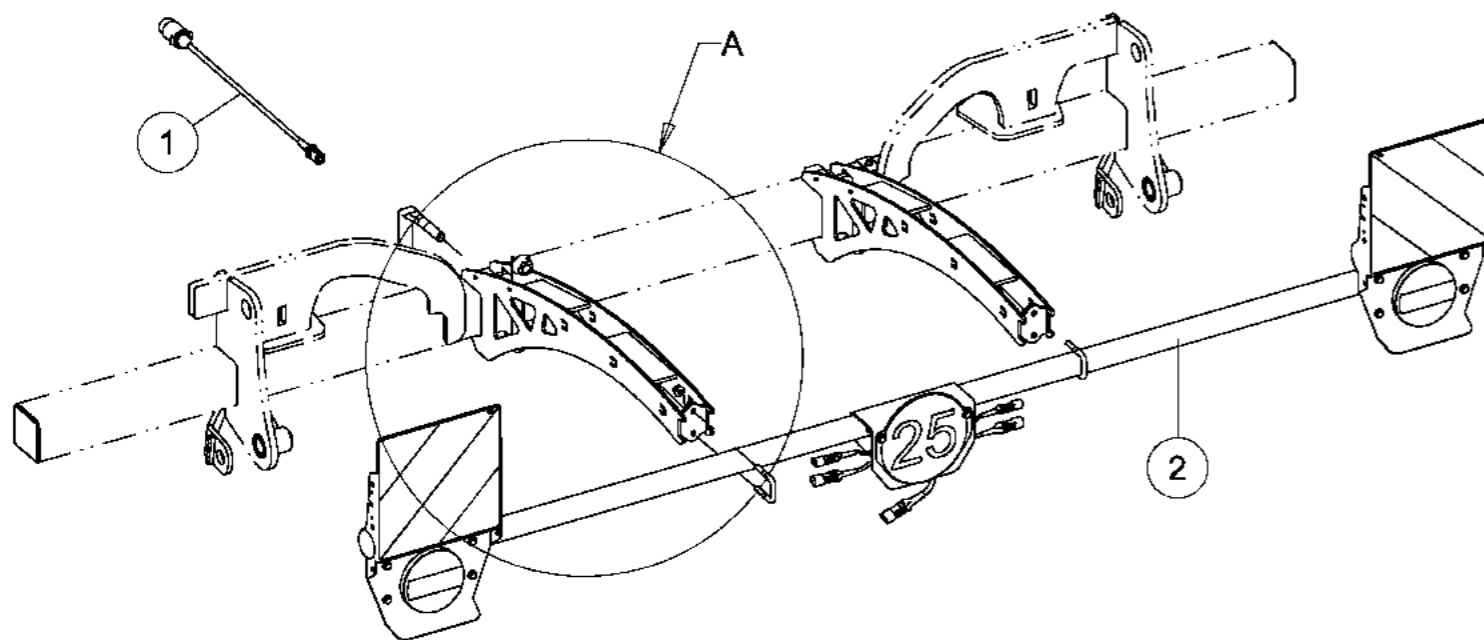
	Phone : +49-(0)-5472-771-0
	Fax : +49-(0)-5472-771-190
Gregoire-Besson GmbH 49152 Bad Essen	
DESSINATEUR : LIBOUTET B.	FOLIO : 2 / 2



*Kit d'éclairage sans acces. 3.0m P.*

*Lighting kit without acces. 3.0m M.*

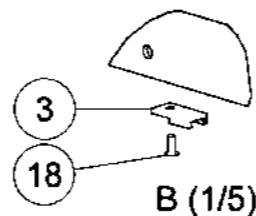
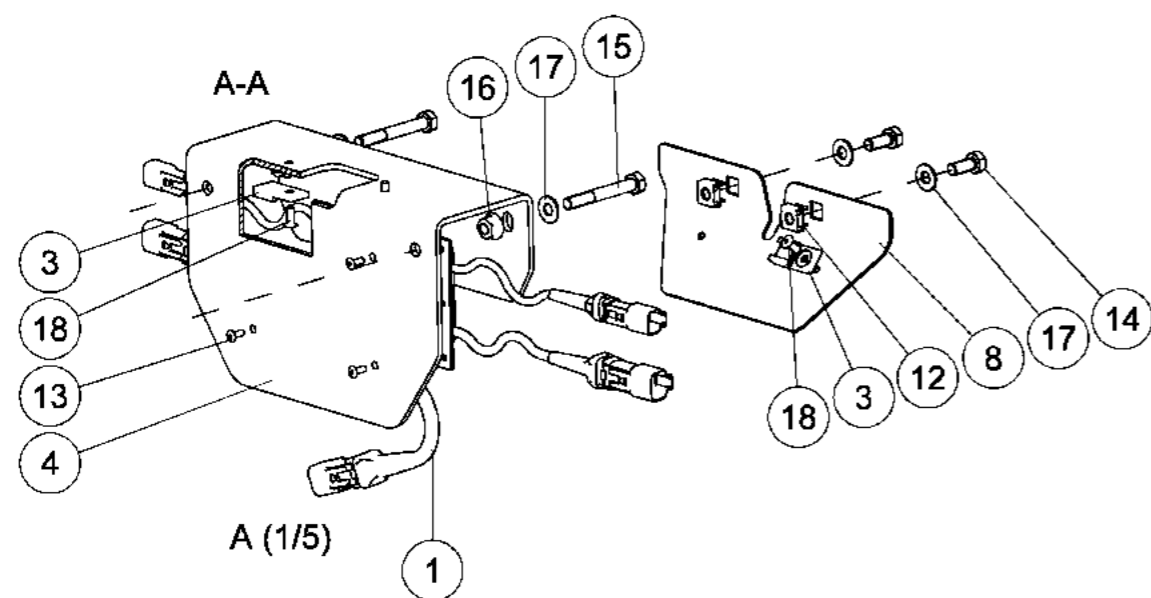
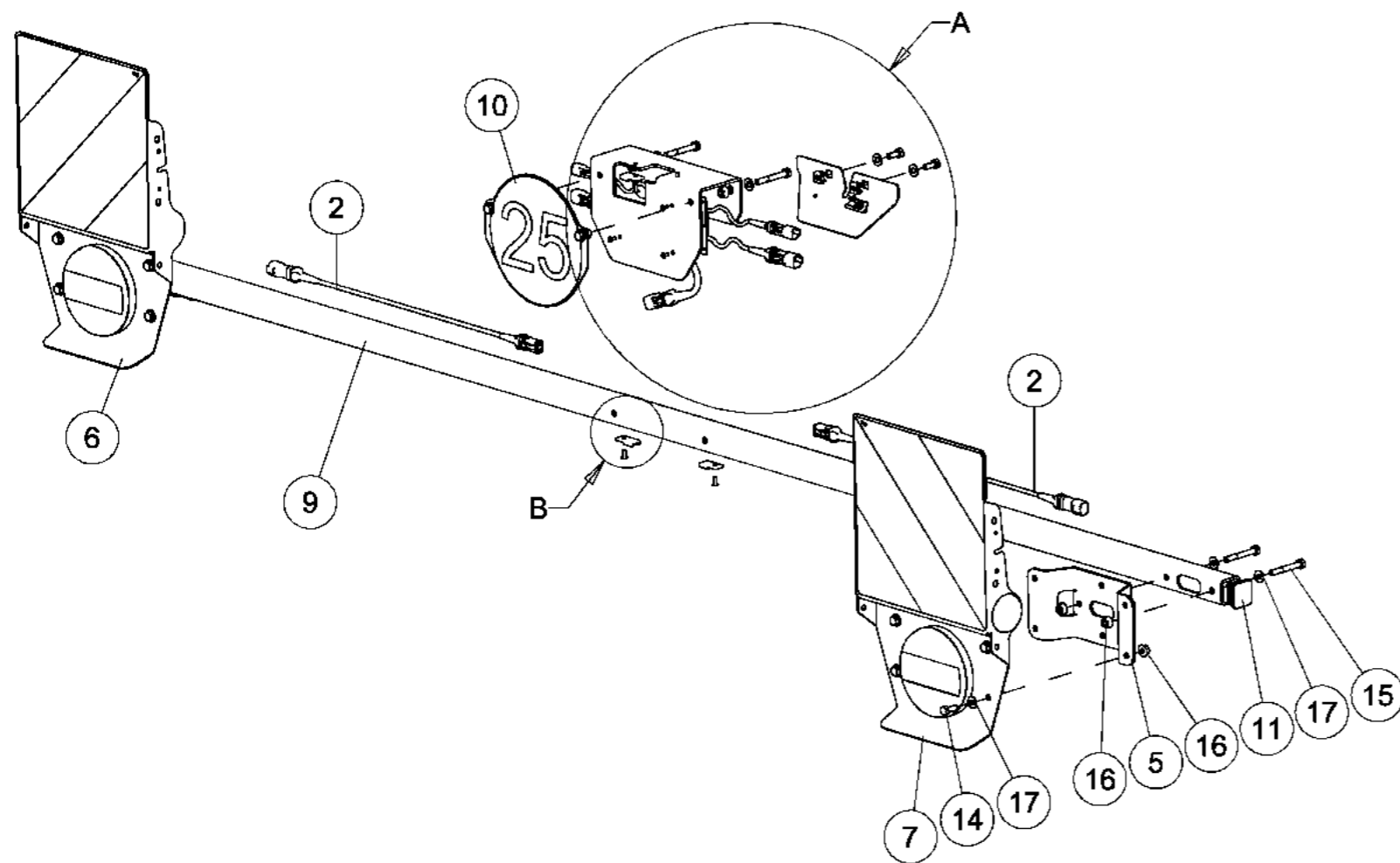
Index	Quantite	Reference	Designation
1	1	1 221 432-7500	Câble prise alu. 7P / connect. 6P Cable with plug 7W alu. / plug 6W
2	1	6 433 979	Rampe d'éclairage 3.0m VP. Lighting ramp 3.0m VM.
3	2	6 433 986	Support rampe d'éclairage Lighting ramp support
4	2	M 631 100	Etrier □40 - M10 Flange □40 - M10
5	2	M 631 181	Etrier M20 □100 aplati 10.9 Flange M20 □100 flattened 10.9
6	4	VJ 141	Ecrou HEFR M10 emb. S.Lock Cl.10 HEFR M10 Flg nut Gr.10 ZNBL
7	4	VJ 145	Ecrou HEFR M20 emb. S.Lock Cl.10 HEFR M20 Flg nut Gr.10 ZNBL



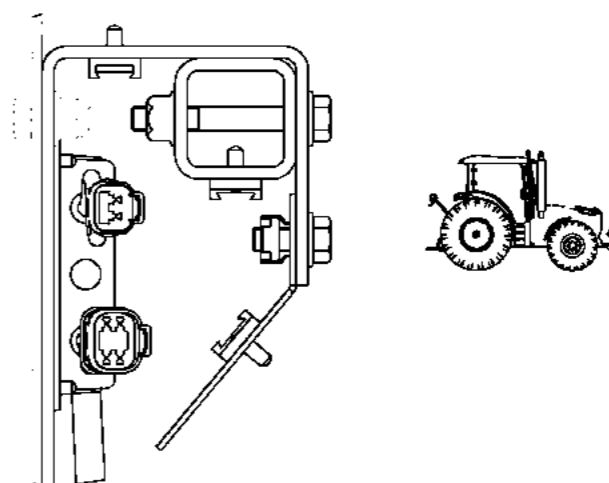
Rampe centrée par rapport à la machine  
/ Ramp centered in relation to the machine

Rampe d'éclairage 3.0m VP.

Lighting ramp 3.0m VM.



Index	Quantité	Reference	Designation
1	1	1 221 431	Boite de dérivation Distribution box
2	2	1 221 434-1250	Rallonge 4 Plots 4-Way extension
3	5	1 222 318	Clip de montage connect. femelle Mounting clip for pins
4	1	6 433 933	Support central boîtier de dériv. Distribution box central support
5	2	6 433 944	Support Support
6	1	6 433 945	Module d'éclairage VP Gch. Lighting unit VM LH
7	1	6 433 946	Module d'éclairage VP Drt. Lighting unit VM RH
8	1	6 433 963	Protection centrale Central protection
9	1	6 433 976	Tube rampe d'éclairage 3.0m Light ramp tube 3.0m
10	1	6 433 994	Module panneau 25km/h 25km/h sign unit
11	2	850 100 373	Bouchon plast. pour tube 40x40x4 Square plastic plugs LQ40x40x4
12	2	851 055 793	Ecrou à cage M8 Cage nut M8
13	4	7337D410AL	Rivet "Pop" 4.0x10 Rivet "Pop" alu Dia 4.0x10
14	10	VI 27 04	Vis H M8x 20 - 8.8 ZNBL Screw H M8x 20 - 8.8 ZNBL
15	6	VI 27 11	Vis H M8x 60 - 8.8 ZNBL Screw H M8x 60 - 8.8 ZNBL
16	14	VJ 140	Ecrou HEFR M8 emb. S.Lock Cl.10 HEFR M8 Flg nut Gr.10 ZNBL
17	16	VK 502	Rondelle plate MU8 ZNBL Flat washer MU8 ZNBL
18	5	VM 414	Rivet "Pop" 4.8x12 Rivet "Pop" alu Dia 4.8x12







A series of horizontal dotted lines for writing notes.





---

## **RABE**

ZI Nord Les Gaudères  
37130 Langeais  
**France - Frankreich**

Tel. (+33) 2 47 96 72 61  
Fax (+33) 2 47 96 71 85  
info@rabe-gb.fr  
www.rabe-gb.fr

---

## **RABE**

Am Rabewerk 1  
49152 Bad Essen  
**Allemagne - Deutschland**

Tel. +49 (0) 54 72 771 - 0  
Fax +49 (0) 54 72 771 -195  
info@rabe-gb.de  
www.rabe-gb.de